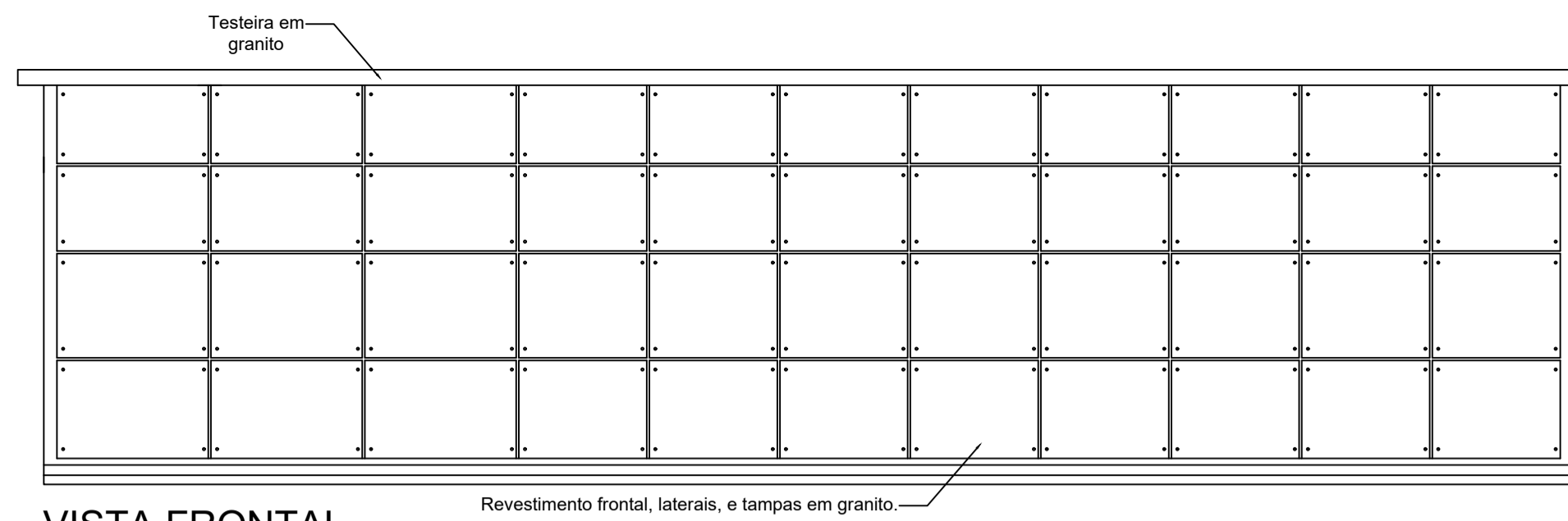
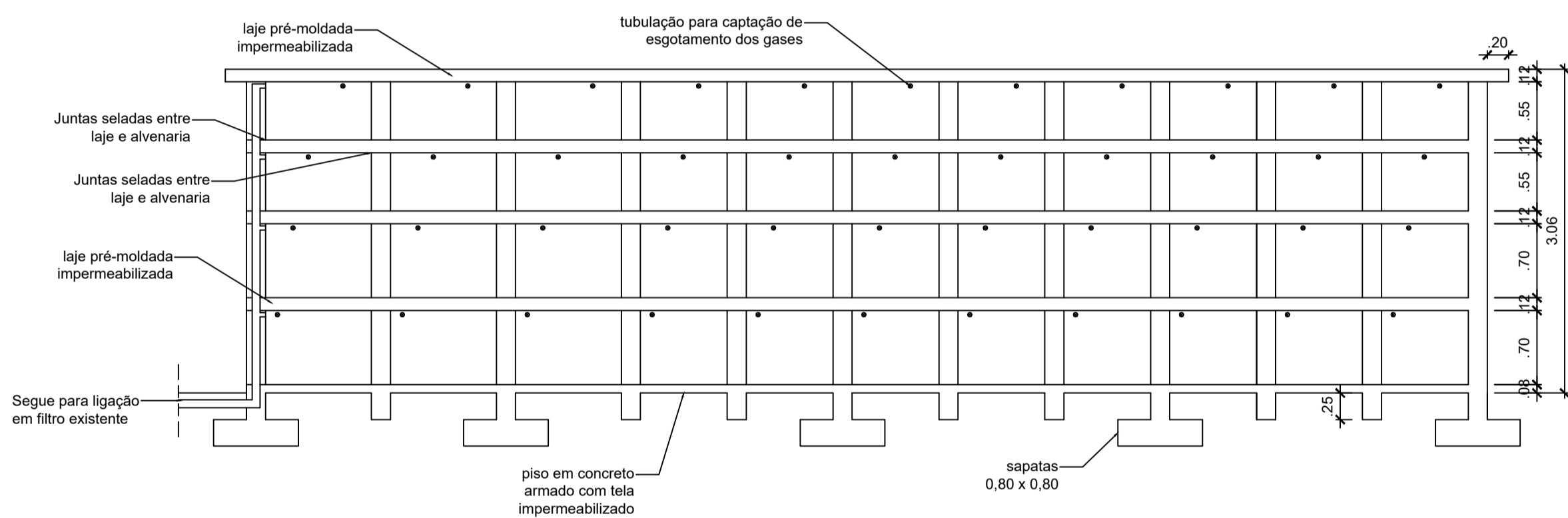


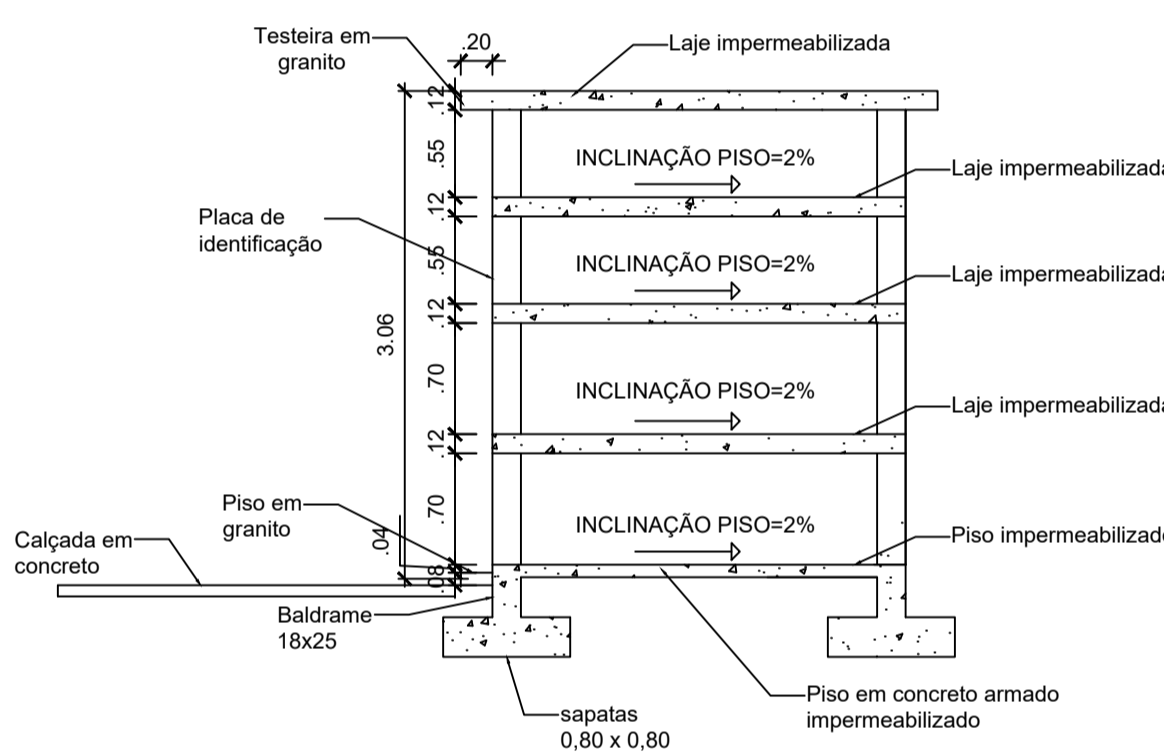
PLANTA BAIXA
Escala 1:50
44 unidades
Área lóculos = 30,47 m²
Área calçada = 31,24 m²



VISTA FRONTAL
Escala 1:50

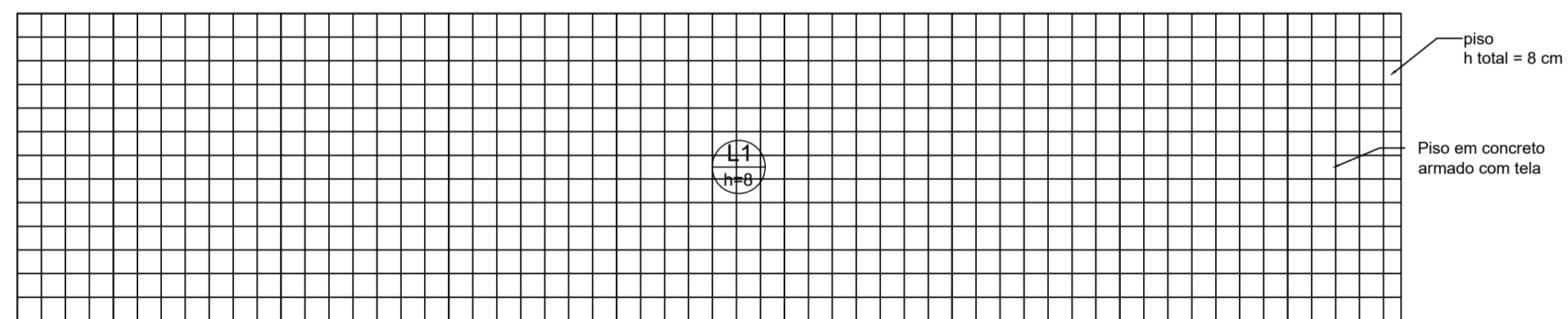


CORTE AA'
Escala 1:50

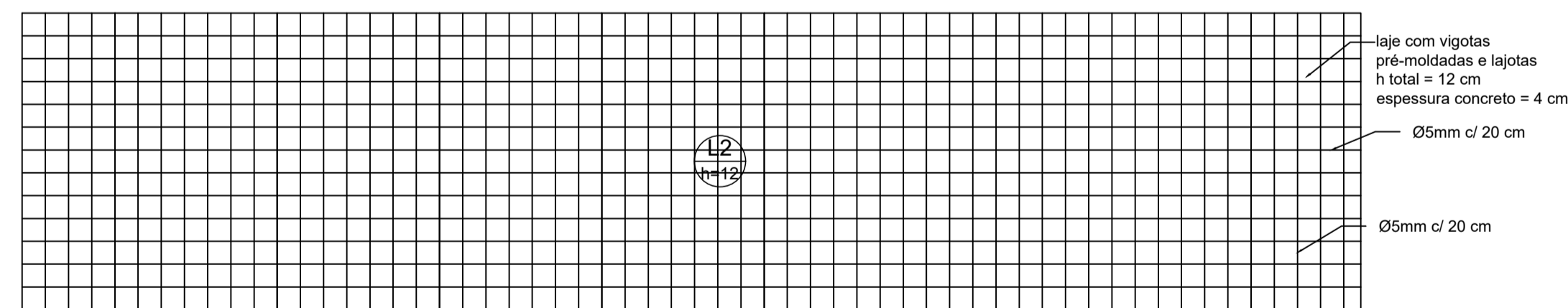


CORTE BB'
Escala 1:50

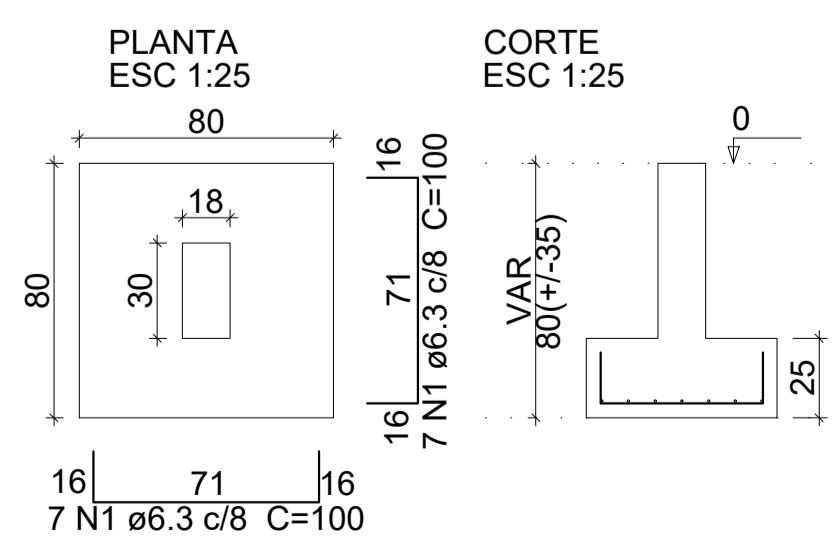
Detalhamento Piso
Escala 1:50



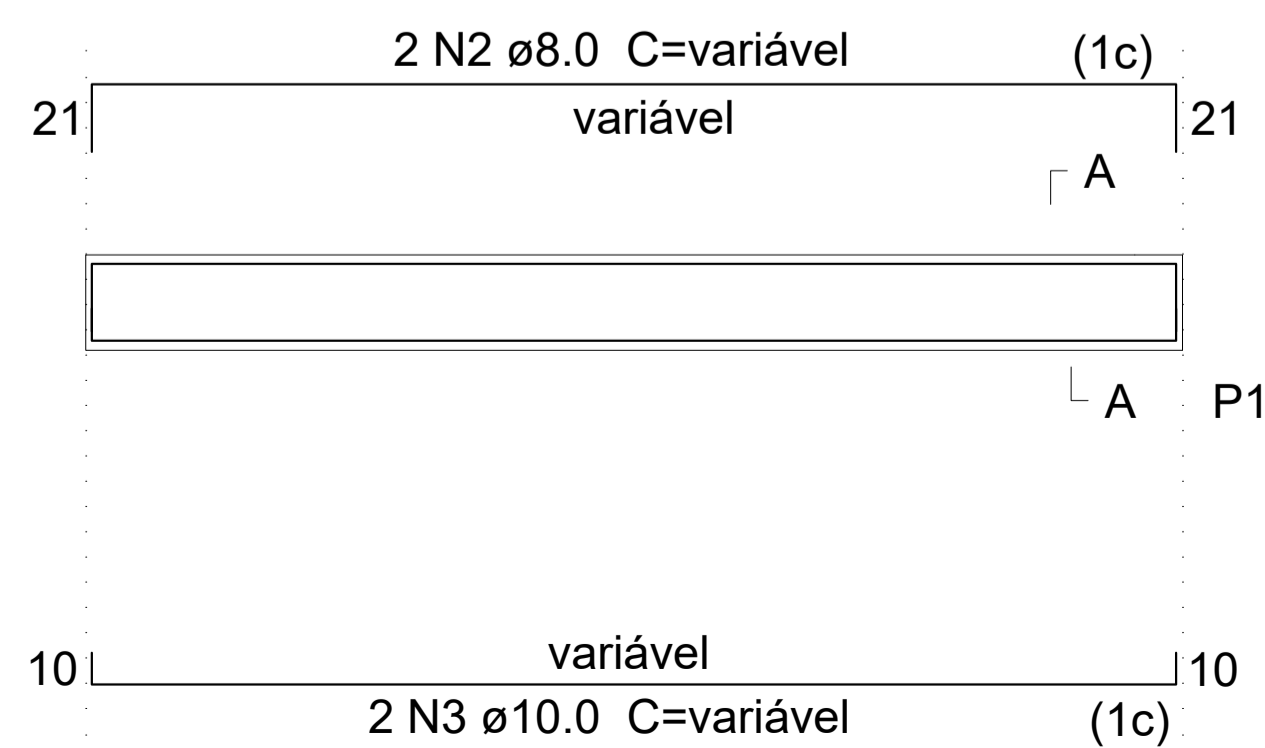
Detalhamento Laje
Escala 1:50



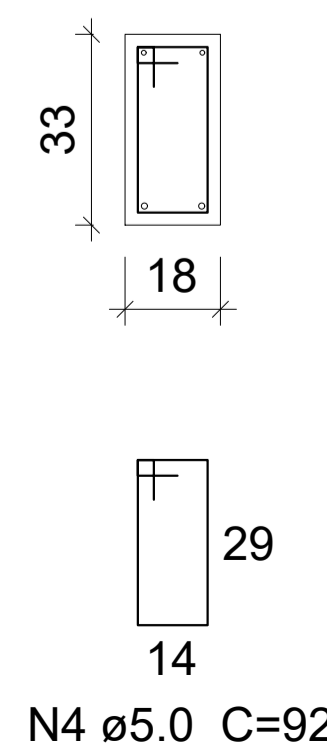
Detalhamento Sapatas



Detalhamento Vigas
ESC 1:25



SEÇÃO A-A
ESC 1:25



MUNICÍPIO DE CAMPO BELO DO SUL

CONSTRUÇÃO DE LÓCULOS
Jazigo Simples 44 unidades (gavetas) - Cemitério Municipal
Avenida Brasil, Município de Campo Belo do Sul - SC

PRANCHA:
01/01

DATA:
17/02/2021

DESENHO:
SARAH

ESCALAS:
INDICADAS

ÁREA:
30,47 m²

RESPONSÁVEL TÉCNICO:
SARAH DUTRA
Engenheira Civil
CREA - SC 123628-3

PROPRIETÁRIO:
MUNICÍPIO DE CAMPO BELO DO SUL
CNPJ: 82.777.319/0001-92