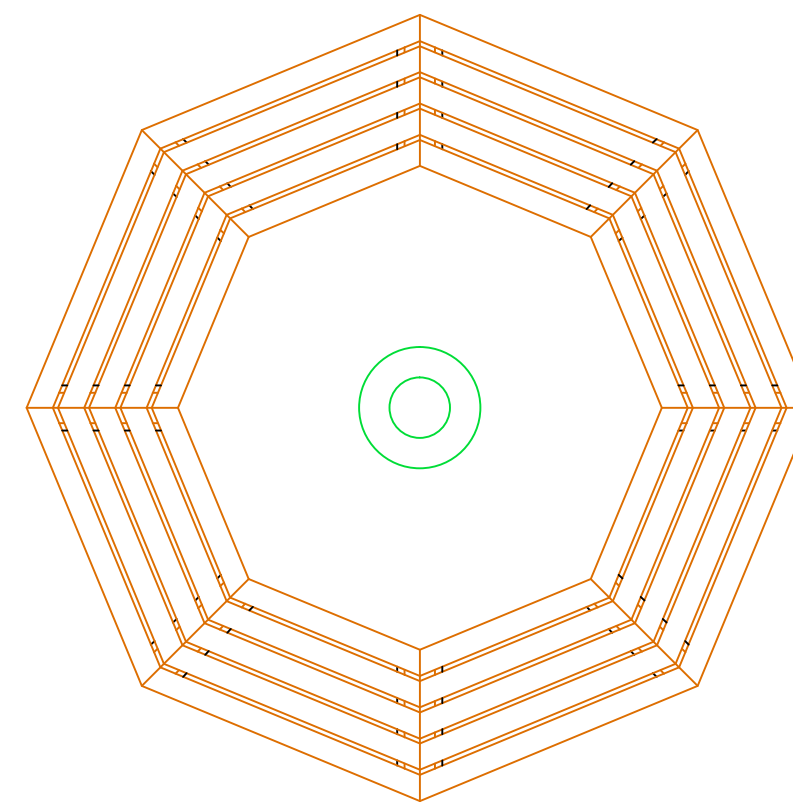
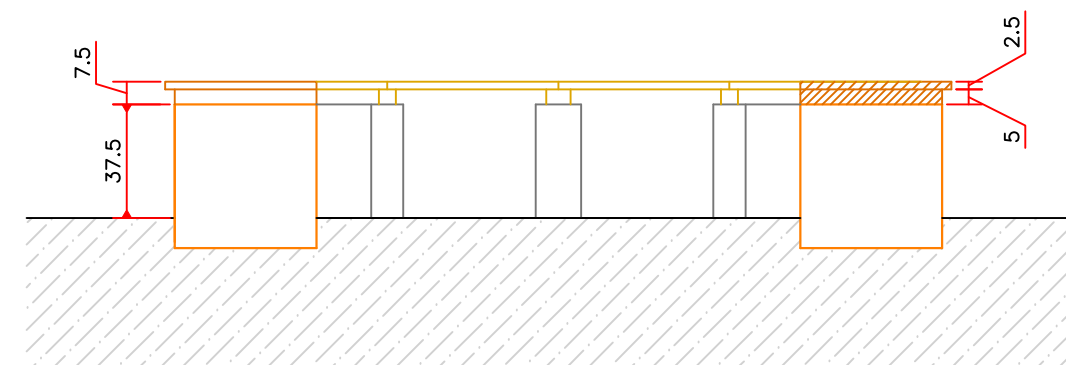


Planta Baixa
Escala 1/25

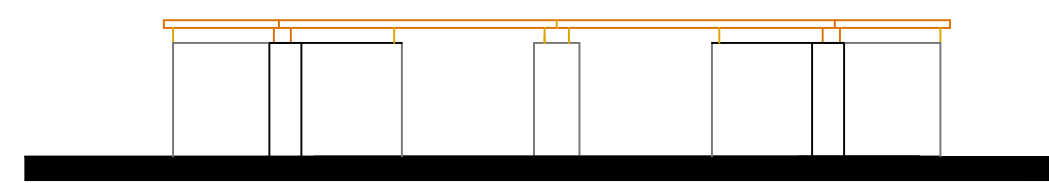
BANCO REDONDO



Vista superior
Escala 1/25

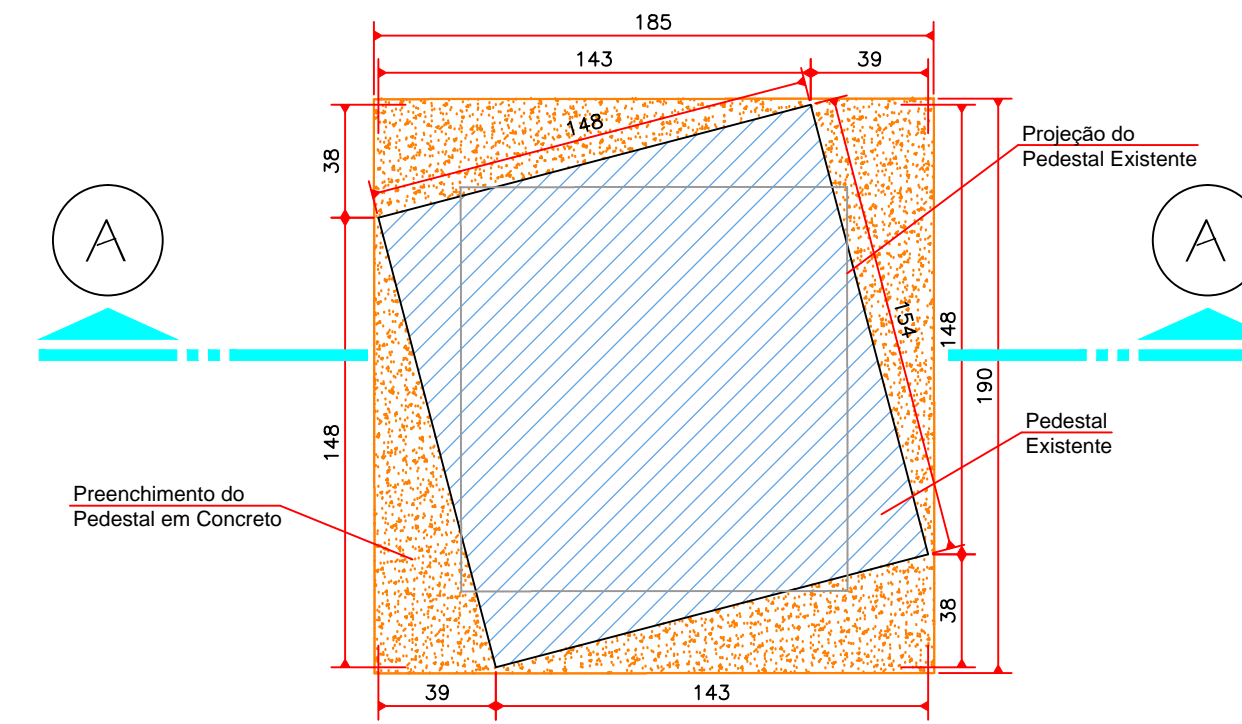


Corte AA'
Escala 1/25

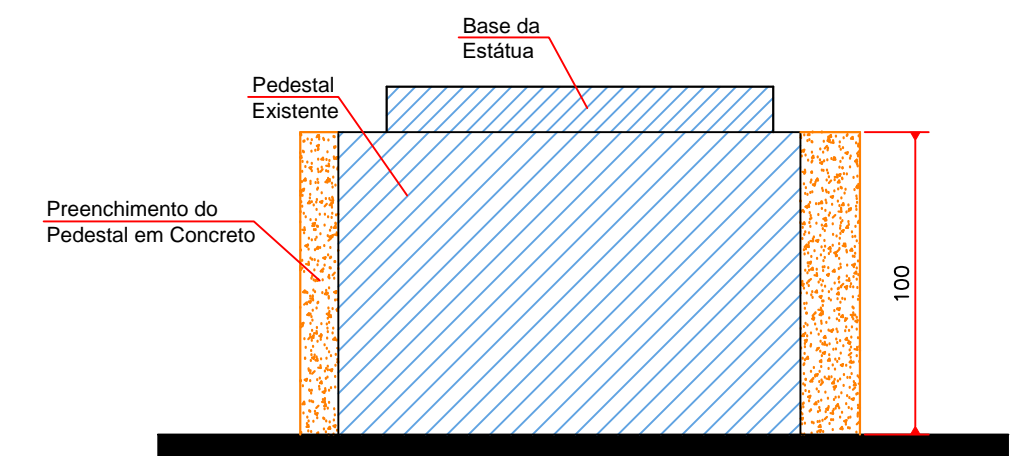


Vista Frontal
Escala 1/25

PEDESTAL DA ESTÁTUA

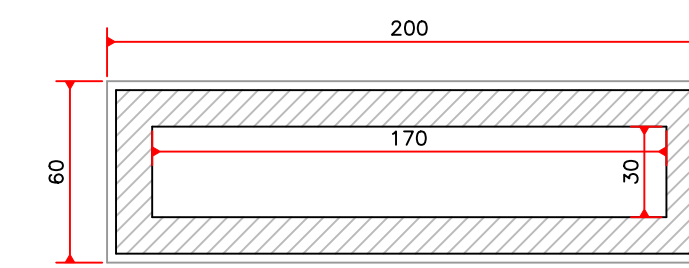


Planta Baixa
Escala 1/25

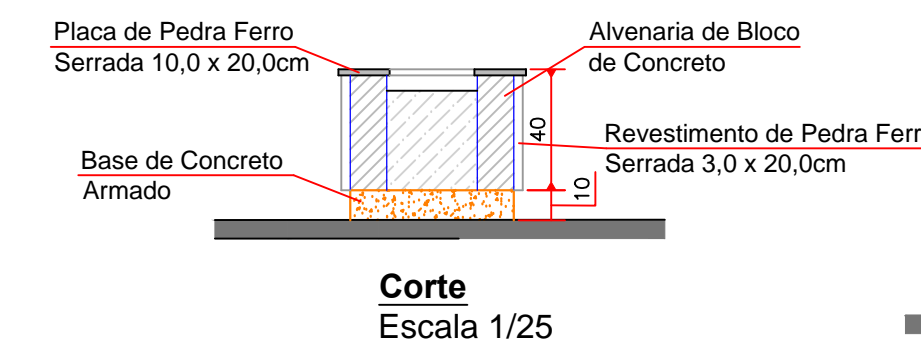


Corte AA'
Escala 1/25

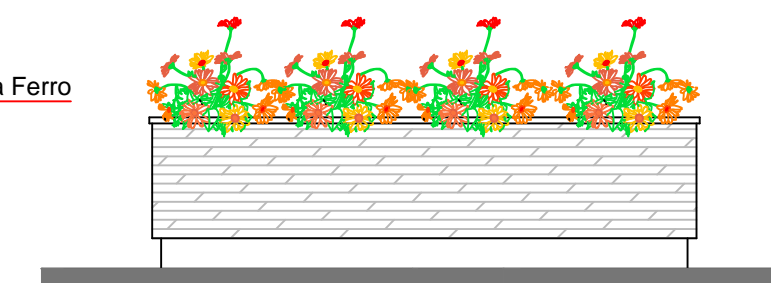
Floreira entre Bancos



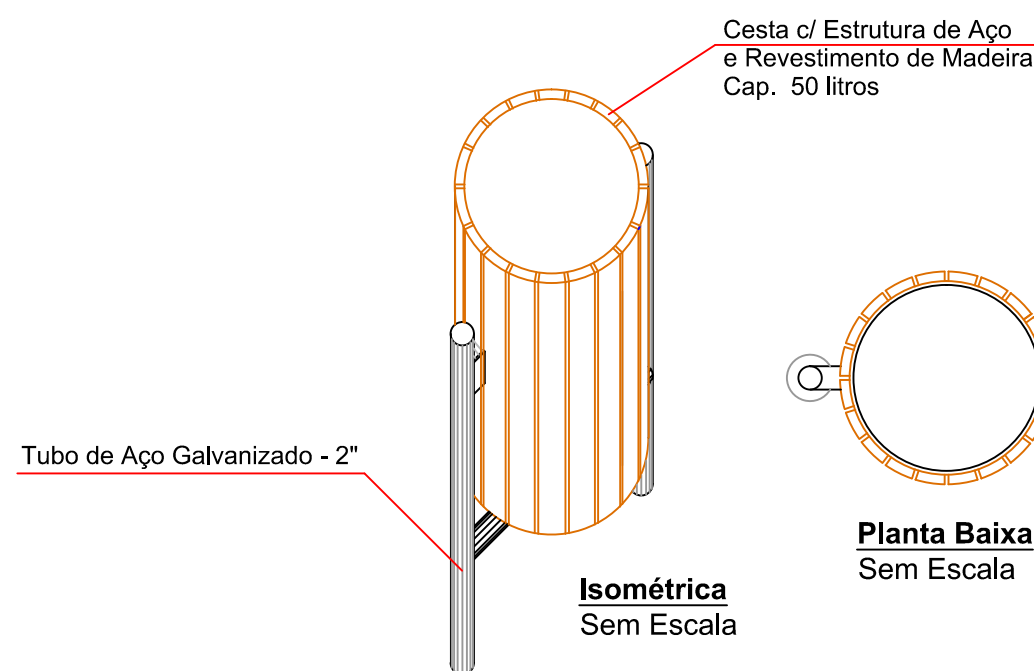
Planta Baixa
Escala 1/25



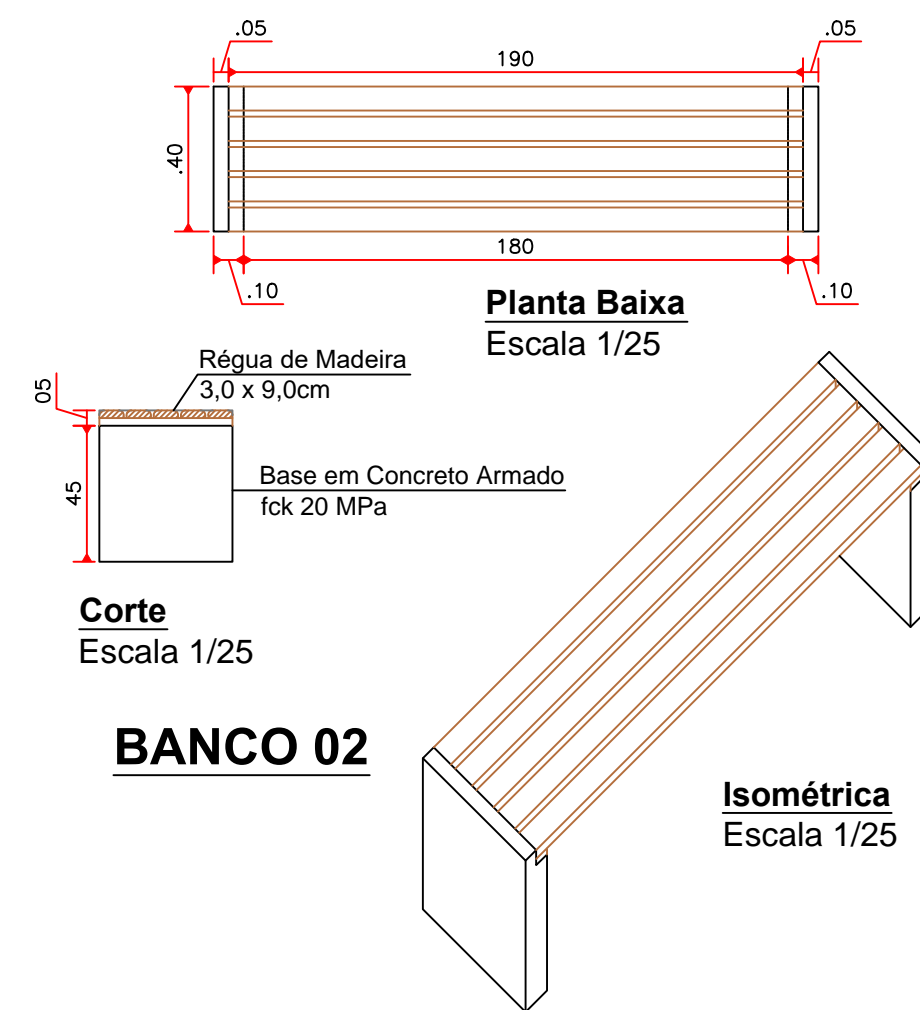
Corte
Escala 1/25



Vista Frontal
Escala 1/25



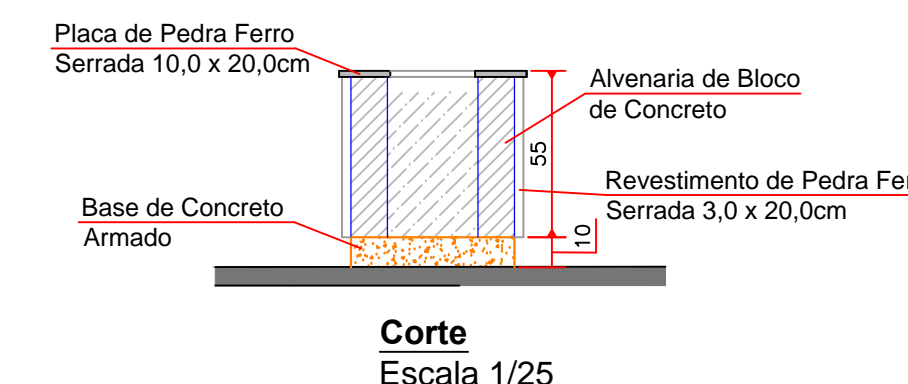
LIXEIRA EM AÇO E MADEIRA



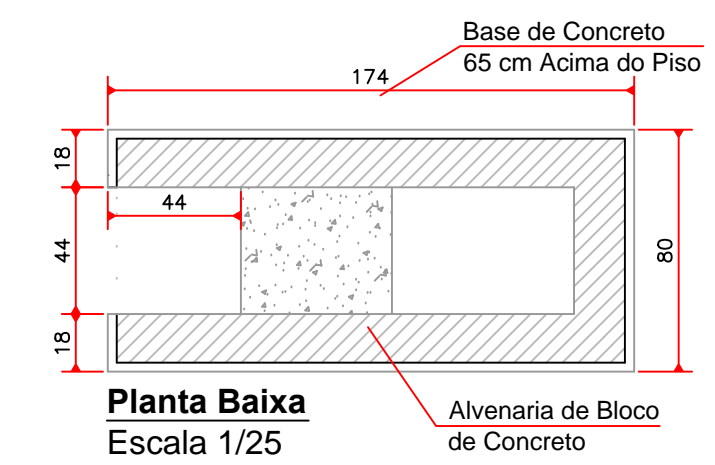
BANCO 02

Isométrica
Escala 1/25

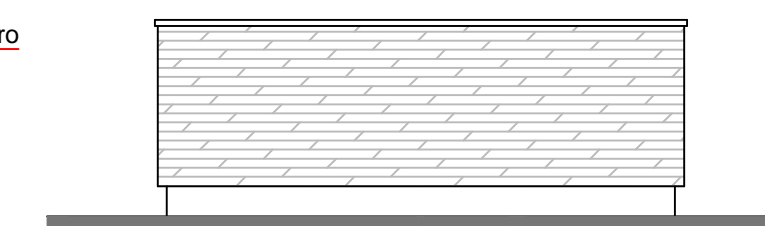
Base para Painél Digital



Corte
Escala 1/25

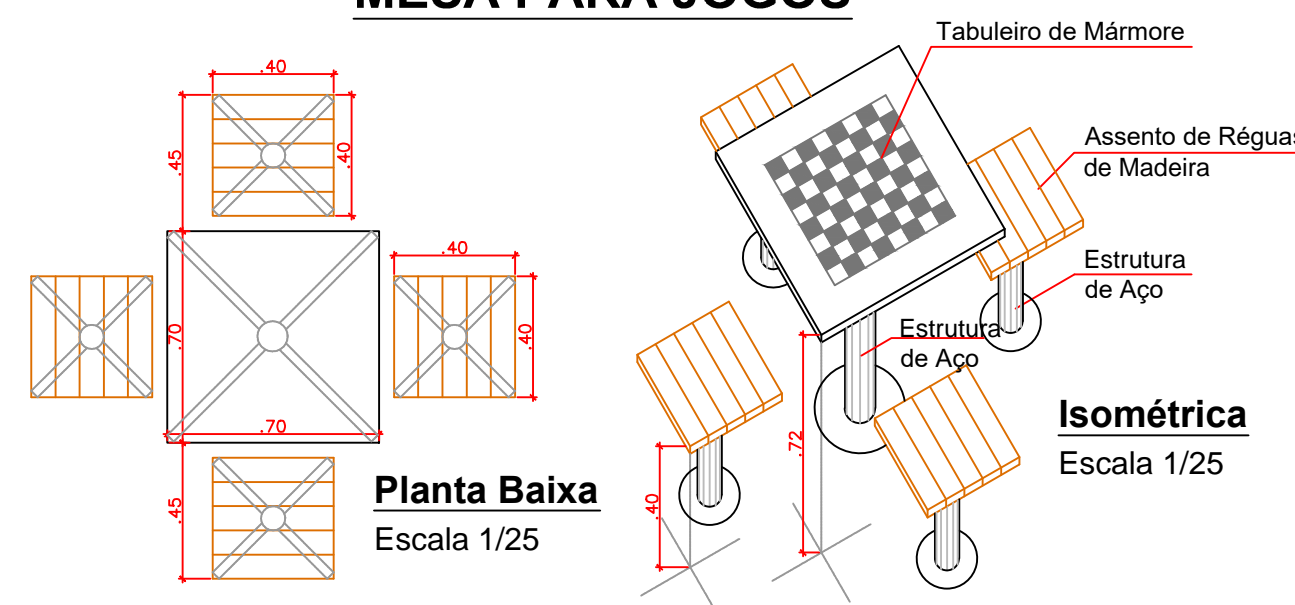


Planta Baixa
Escala 1/25



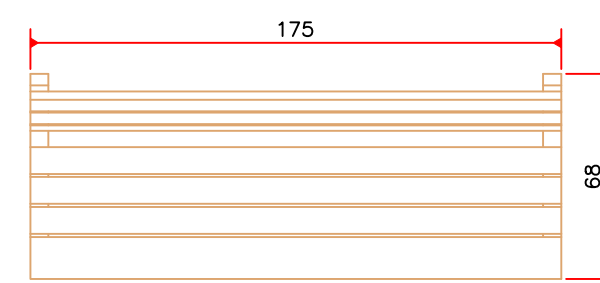
Vista Frontal
Escala 1/25

MESA PARA JOGOS



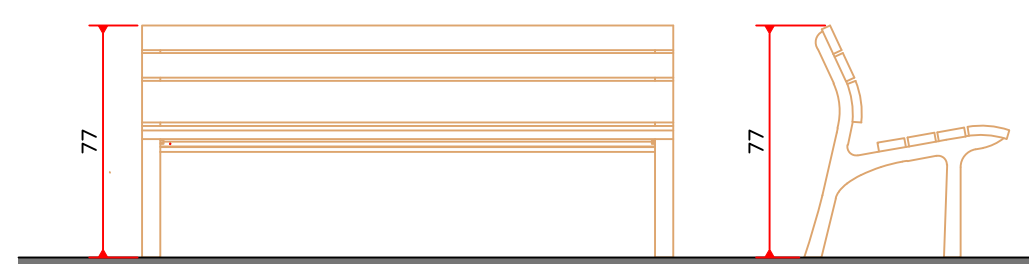
Planta Baixa
Escala 1/25

Isométrica
Escala 1/25



BANCO 02

Planta Baixa
Escala 1/25



Vista Frontal
Escala 1/25

Corte
Escala 1/25

AMURES

ASSOCIAÇÃO DE MUNICÍPIOS DA REGIÃO SERRANA

PREFEITURA MUNICIPAL DE CAMPO BELO DO SUL - SC

09/09

ASSESSORIA TÉCNICA

OBRA:

PREFEITA: CLAUDIANE VARELA PUCCI

PROJETO: Elisiano Gurdtnr CAU - A17356-8

PRÇA DA CACIMBA
PROJETO ARQUITETÔNICO
BANCOS, FLOREIRAS, PEDESTAL,
BASE PARA APINEL ELETRÔNICO
PLANTA BAIXA, CORTES,
ELEVÇÕES E VISTA SUPERIOR
ÁREA TOTAL DA INTERVENÇÃO: 1.241,00m²
RRT: 6505695.

Localização: Rua Anísio Martins de Moraes,
Rua José da Costa Varela, Rua Major Teodósio
Purtado - Centro, Campo Belo do Sul SC.

DESENHO: Christine Bernardo Waltrick

TOPOGRAFIA:

Escala:

DATA:

Indicada 11/ 2021