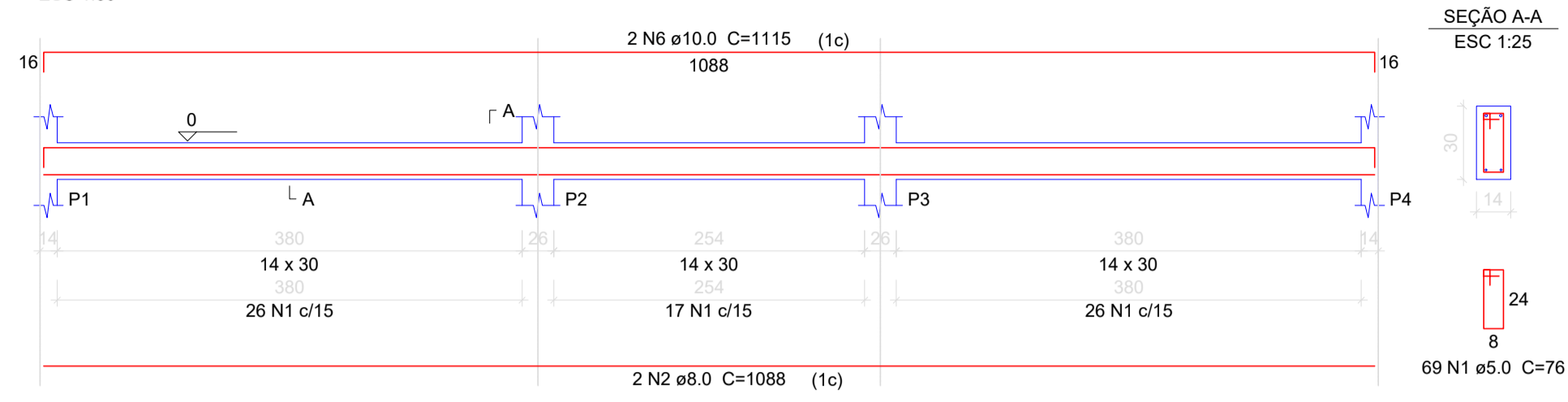
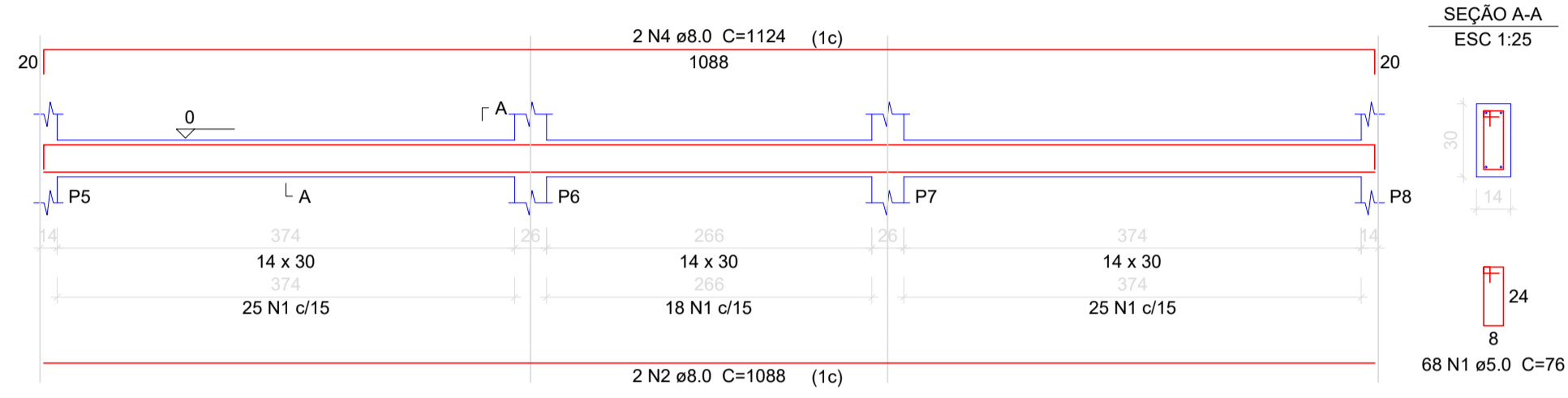


## Pavimento Térreo

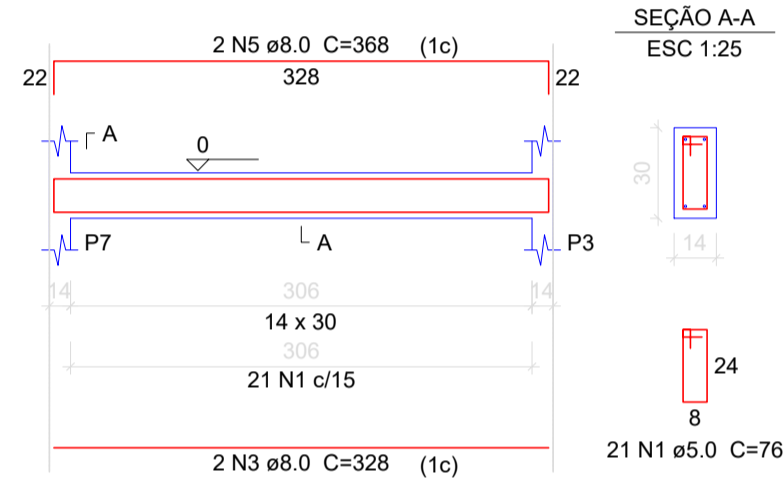
### VB101



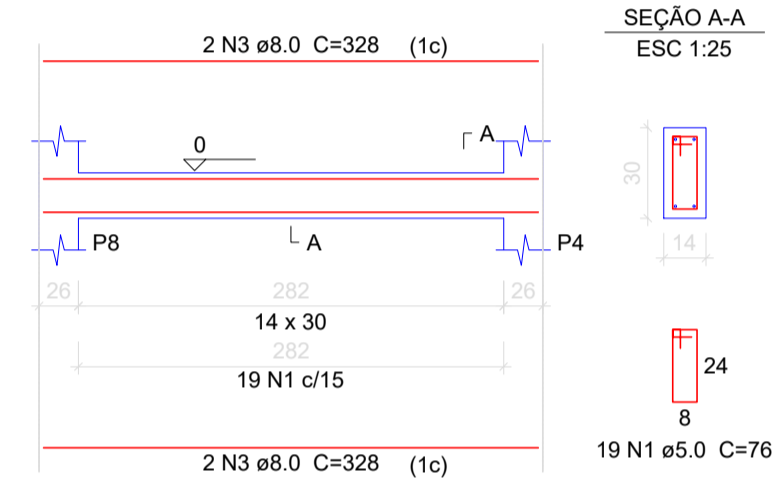
### VB102



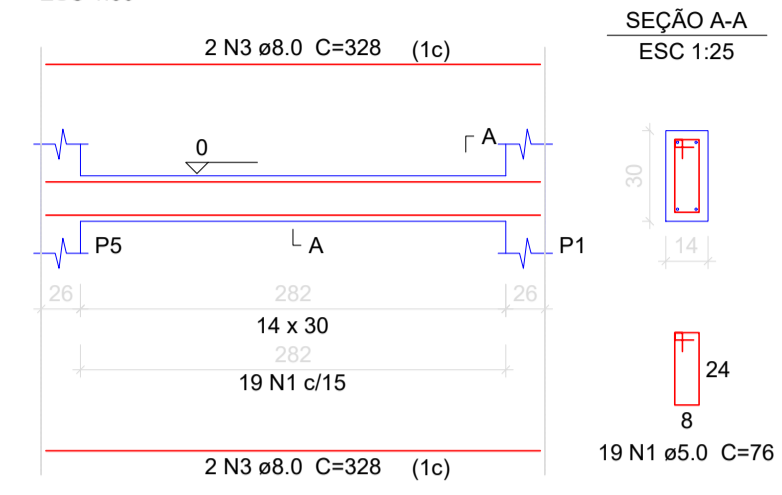
### VB105



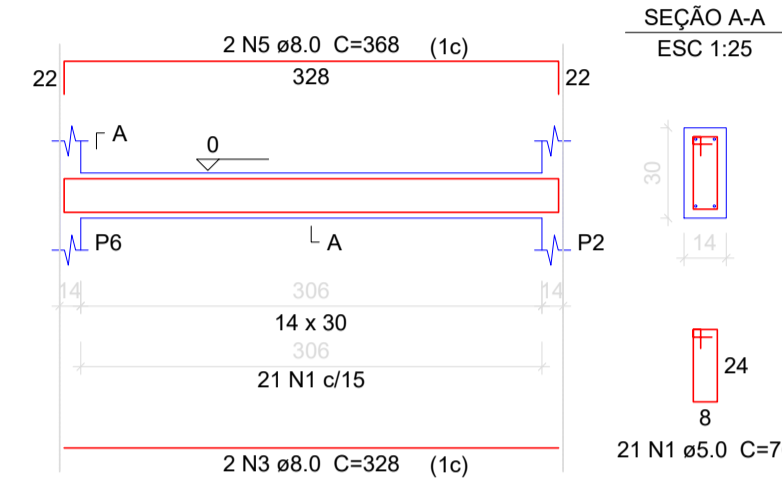
### VB106



### VB103



### VB104



### Relação do aço

AÇO	N	DIAM	Q	UNIT (cm)	C.TOTAL (cm)
CA60	1	5.0	217	76	16492
CA50	2	8.0	4	1088	4352
	3	8.0	12	328	3936
	4	8.0	2	1124	2248
	5	8.0	4	368	1472
	6	10.0	2	1115	2230

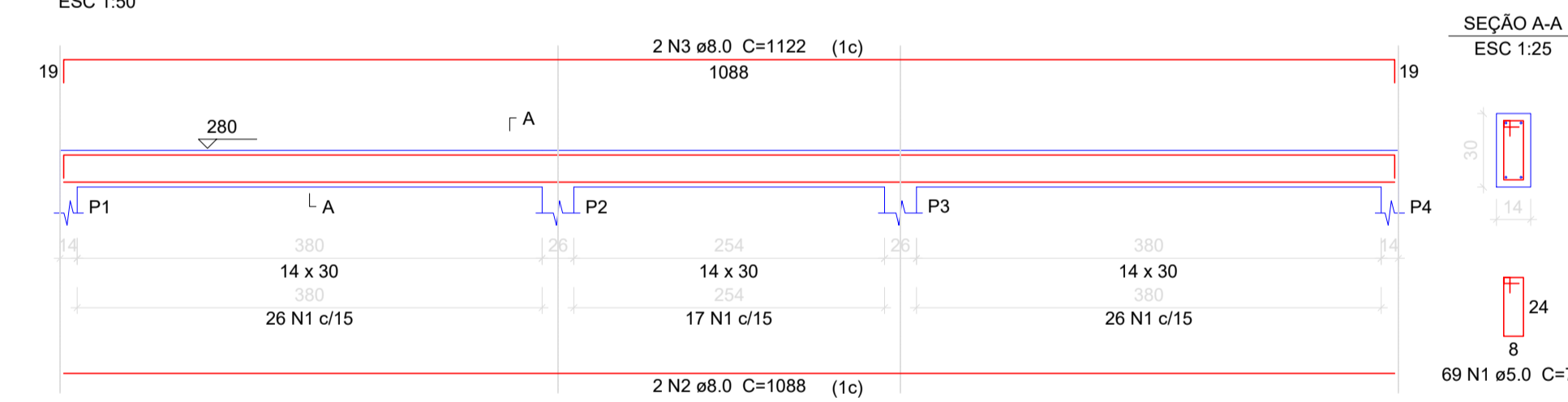
### Resumo do aço

AÇO	DIAM	C.TOTAL (m)	PESO + 10% (kg)
CA50	8.0	120.1	52.1
	10.0	22.3	15.1
CA60	5.0	165	28
<b>PESO TOTAL</b>			
CA50	67.2		
CA60	28		

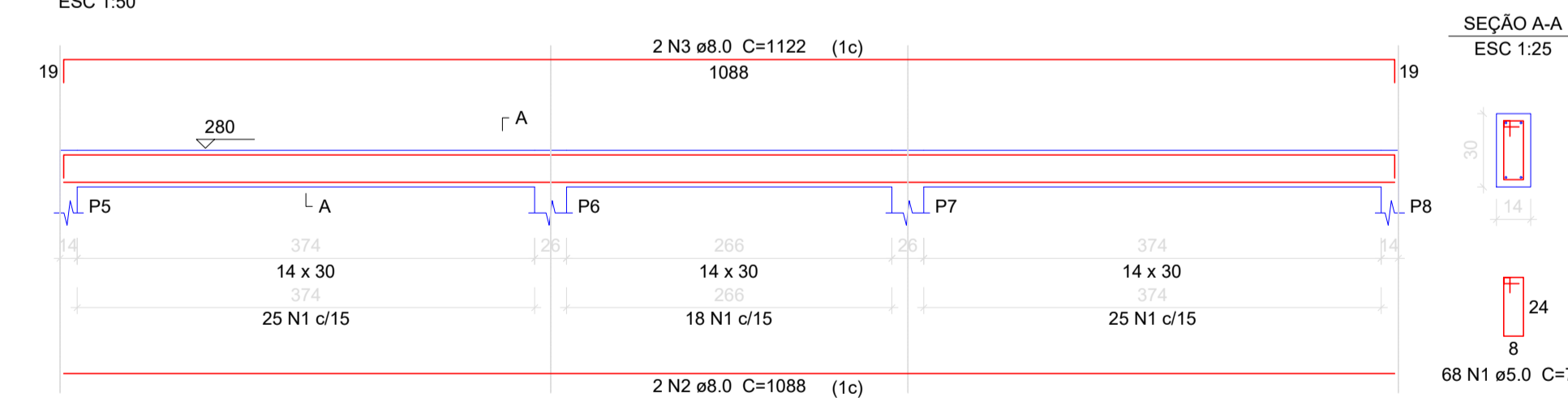
Vol. de concreto total (C-25) = 1.48 m³  
Área de forma total = 26.08 m²

## Pavimento Superior

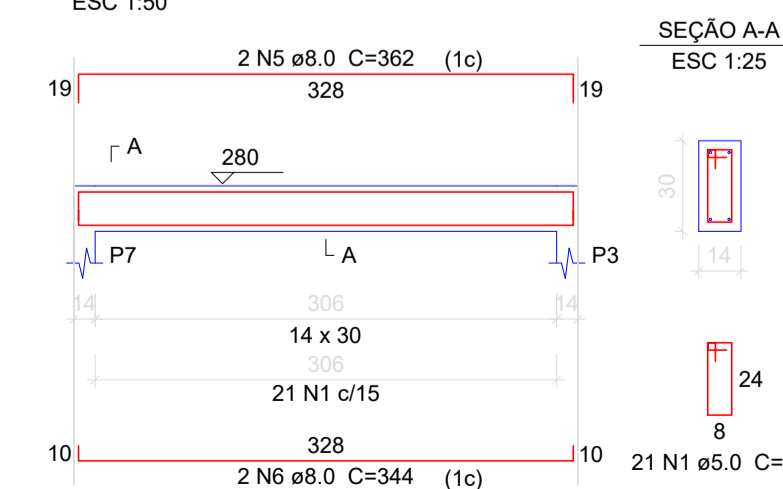
### V201



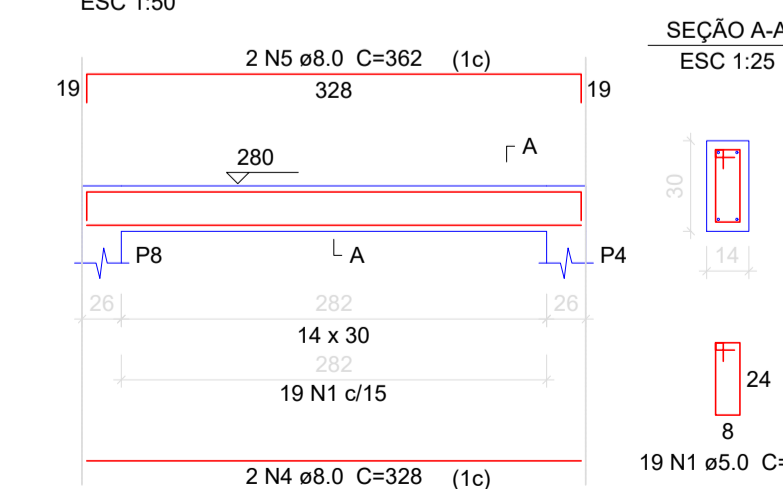
### V202



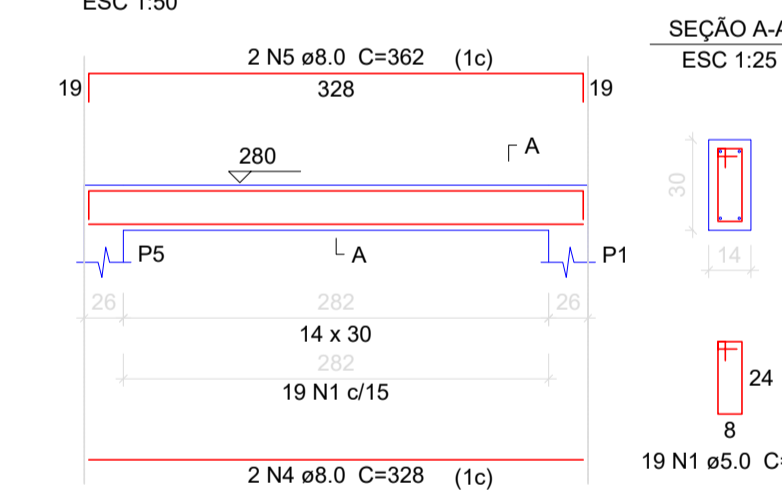
### V205



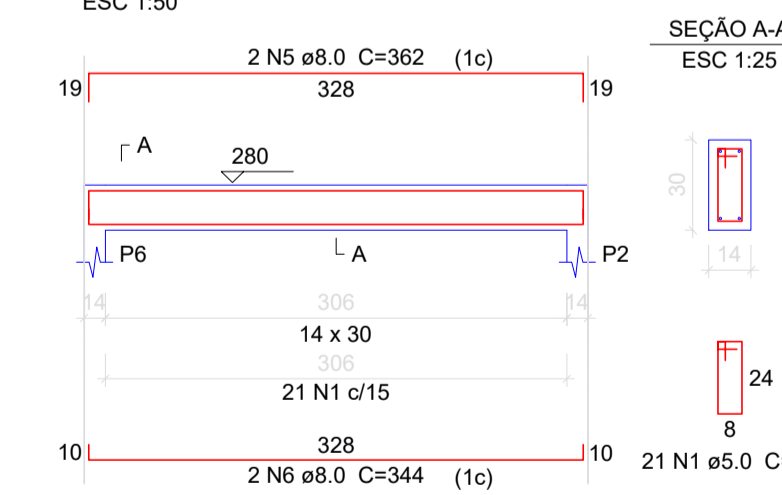
### V206



### V203



### V204



### Relação do aço

AÇO	N	DIAM	Q	UNIT (cm)	C.TOTAL (cm)
CA60	1	5.0	217	76	16492
CA50	2	8.0	4	1088	4352
	3	8.0	4	1122	4488
	4	8.0	4	328	1312
	5	8.0	8	362	2896
	6	8.0	4	344	1376

### Resumo do aço

AÇO	DIAM	C.TOTAL (m)	PESO + 10% (kg)
CA50	8.0	144.3	62.6
CA60	5.0	165	28
<b>PESO TOTAL</b>			
CA50	62.6		
CA60	28		

Vol. de concreto total (C-25) = 1.48 m³  
Área de forma total = 26.08 m²

AMURES

ASSOCIAÇÃO DE MUNICÍPIOS DA REGIÃO SERRANA

PREFEITURA MUNICIPAL DE CAMPO BELO DO SUL

09/09

ASSESSORIA TÉCNICA

OBRA:

Escola Pingo de Gente - Bloco 2  
Projeto Estrutural - Ampliação/Reforma

PROJETO: **Matheus Lorenzetti Casagrande**  
Eng.º Civil - CREA-SC 168793-1

PREFEITO: **Claudiane Varela Pucci**

Área total: 36,68 m²  
Localização: Rua José da Costa Varela s/nº, Bairro: Centro

DESENHO: **Matheus Lorenzetti Casagrande**

Escala: **Indicada** DATA: **11/2021**