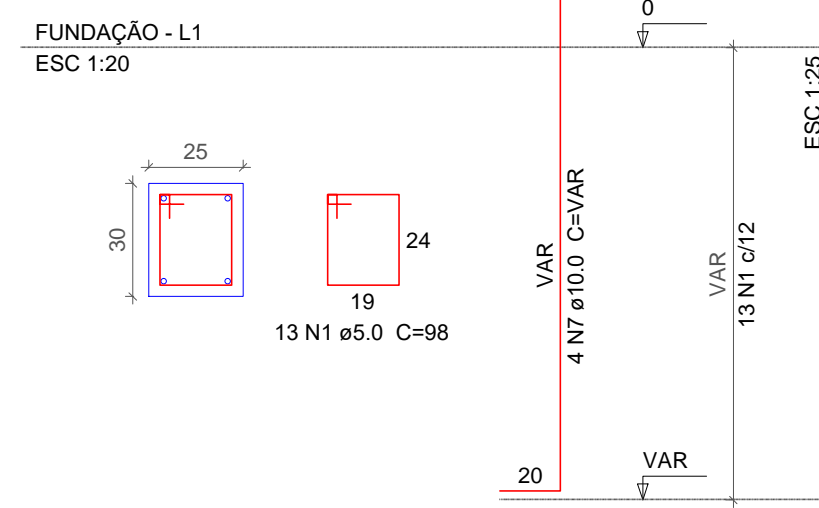
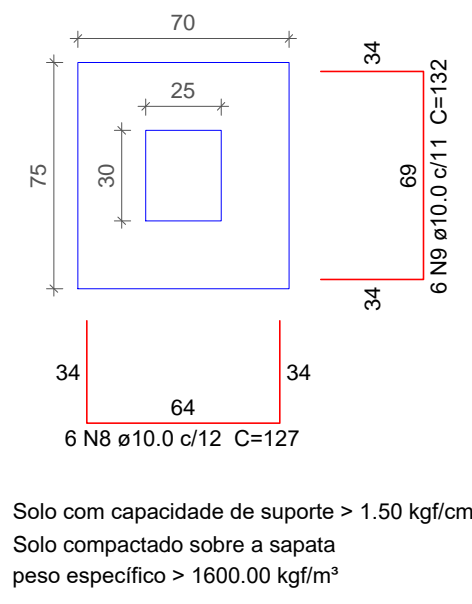


P1=P2=P3=P6=P10=P13

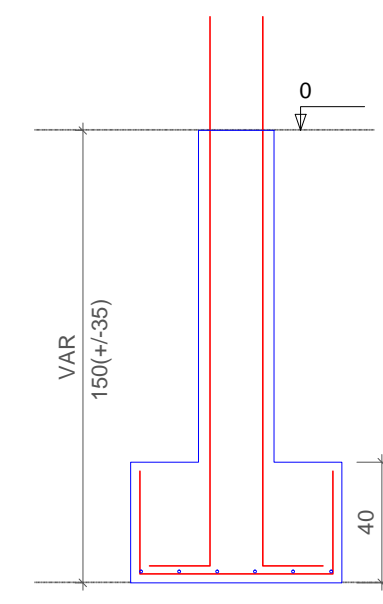


S1=S2=S3=S6=S10=S13  
PLANTA  
ESC 1:25

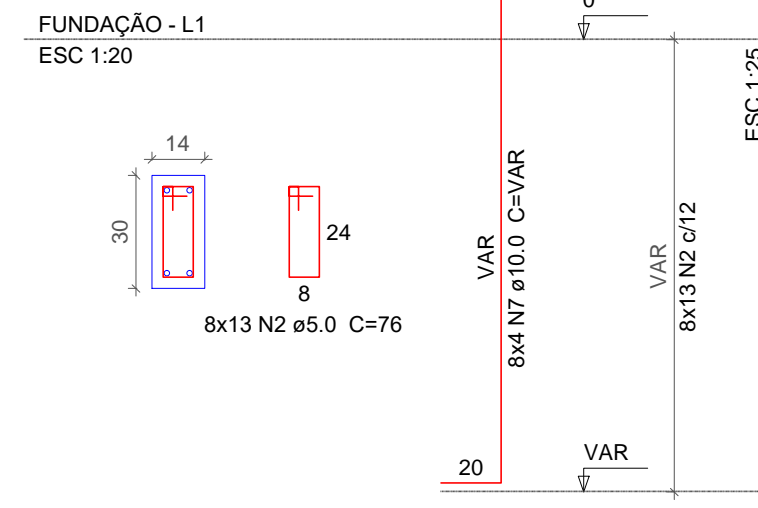


Solo com capacidade de suporte > 1.50 kgf/cm<sup>2</sup>  
Solo compactado sobre a sapata  
peso específico > 1600.00 kgf/m<sup>3</sup>

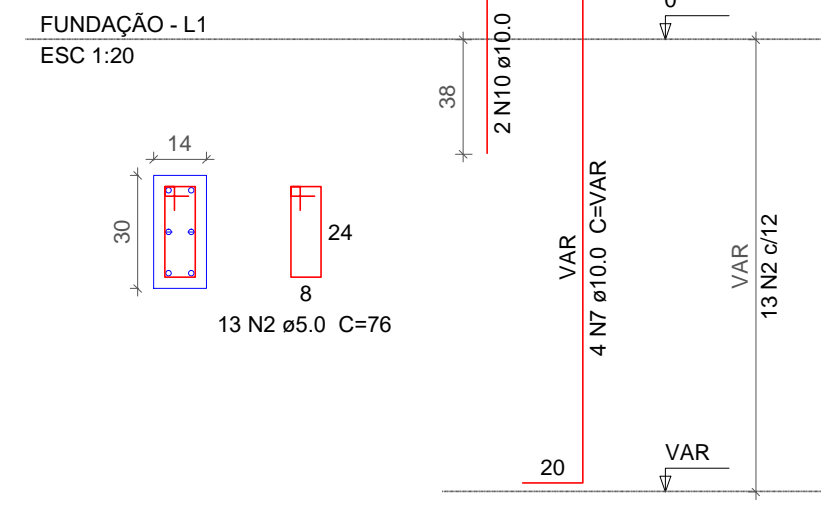
CORTE  
ESC 1:25



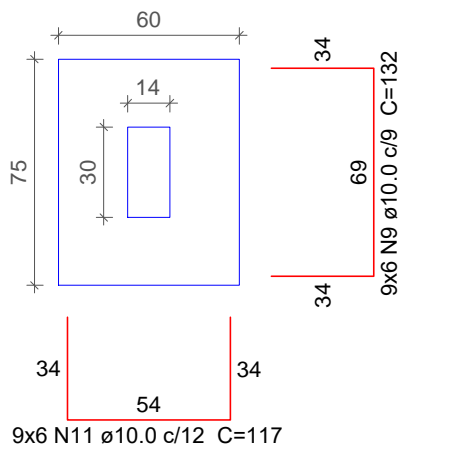
P4=P5=P7=P8=P11=P12=P14=P16



P19

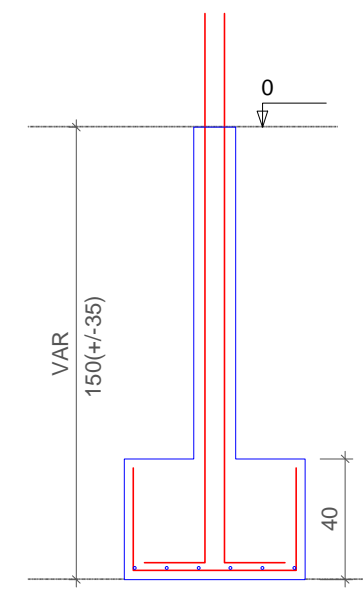


S4=S5=S7=S8=S11=S12=S14=S16=S19  
PLANTA  
ESC 1:25

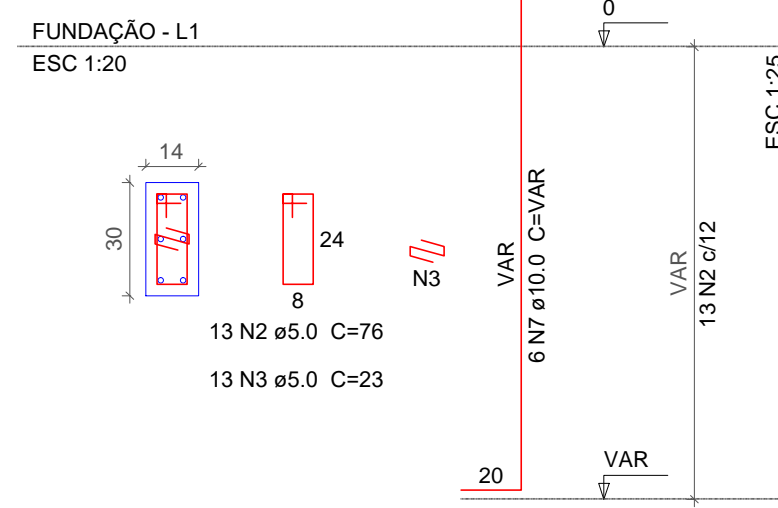


Solo com capacidade de suporte > 1.50 kgf/cm<sup>2</sup>  
Solo compactado sobre a sapata  
peso específico > 1600.00 kgf/m<sup>3</sup>

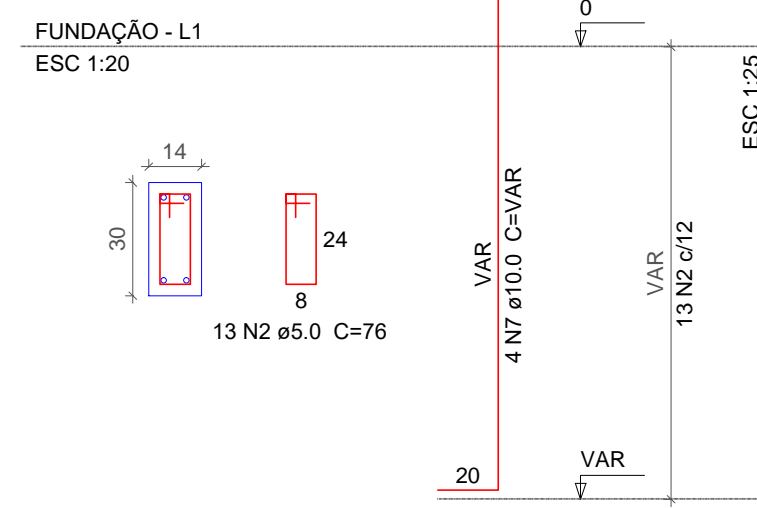
CORTE  
ESC 1:25



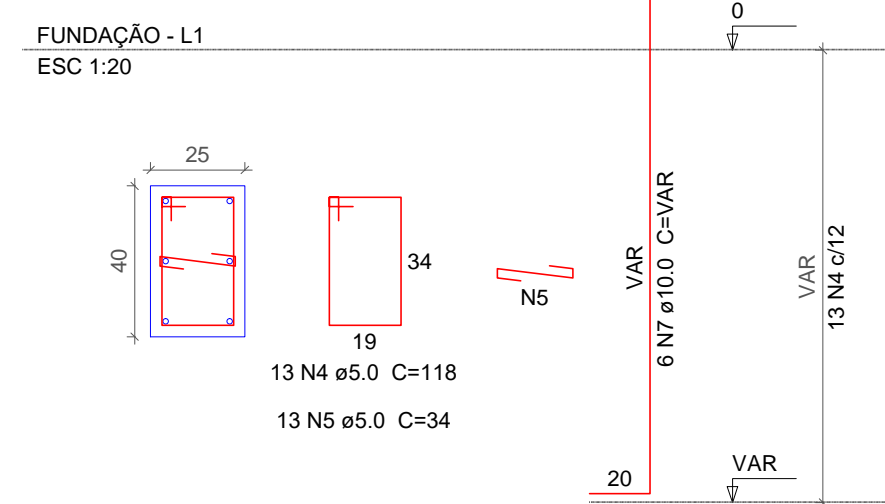
P17



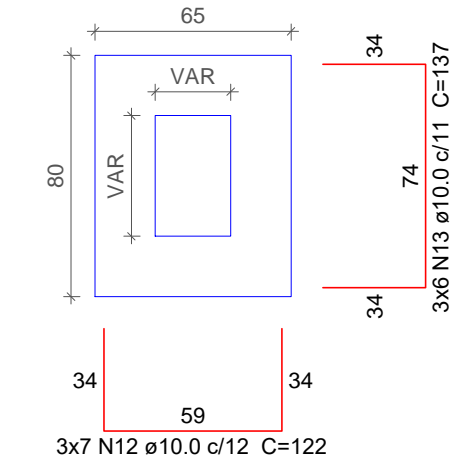
P18



P9

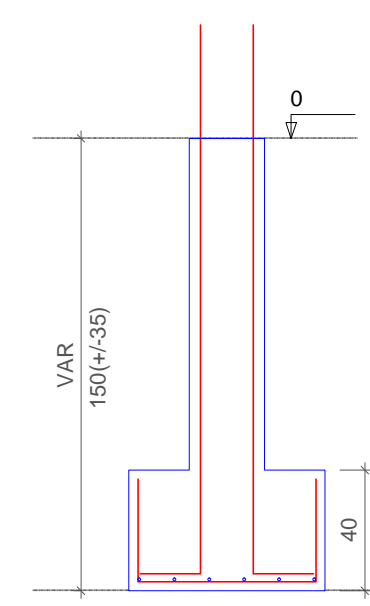


S9=S17=S18  
PLANTA  
ESC 1:25

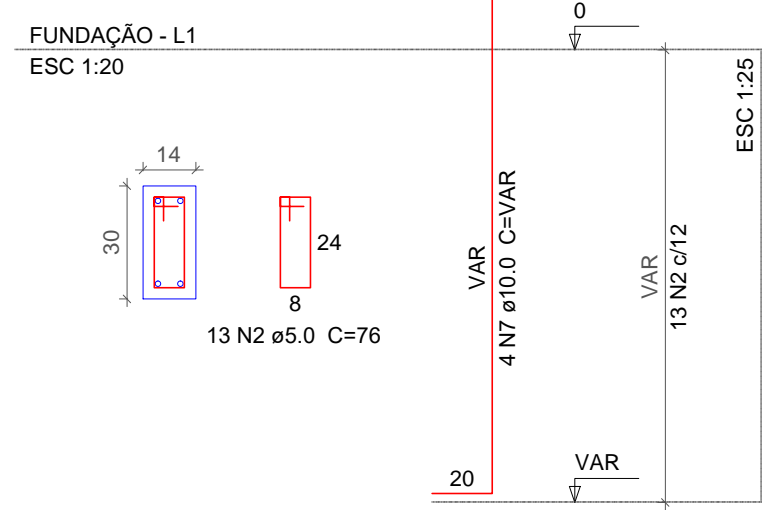


Solo com capacidade de suporte > 1.50 kgf/cm<sup>2</sup>  
Solo compactado sobre a sapata  
peso específico > 1600.00 kgf/m<sup>3</sup>

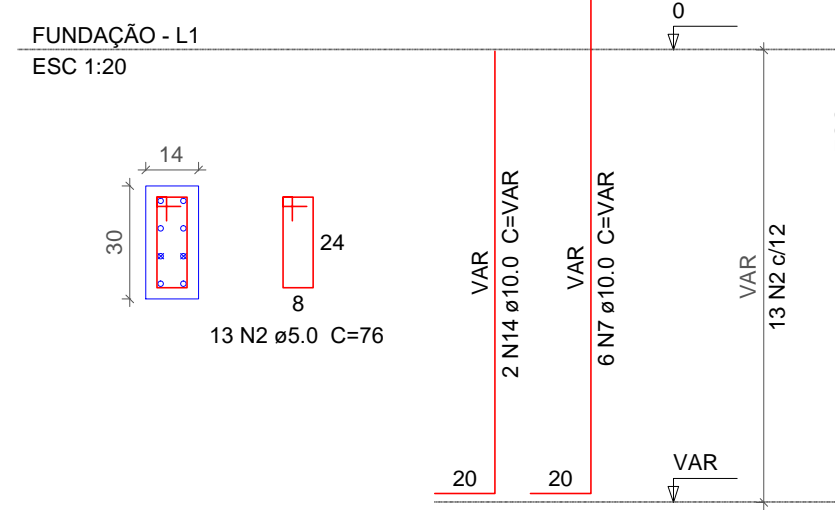
CORTE  
ESC 1:25



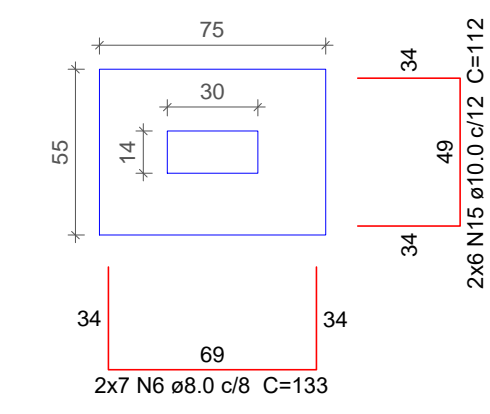
P15



P20

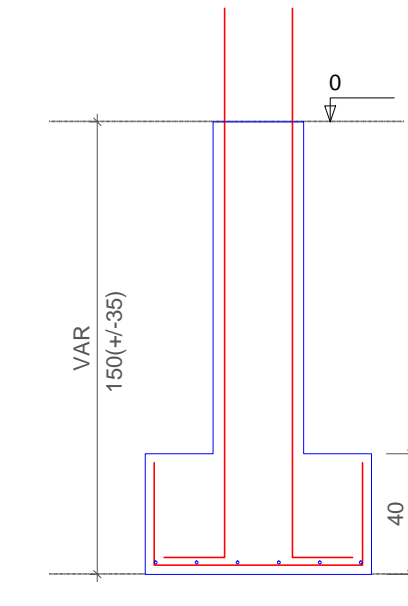


S15=S20  
PLANTA  
ESC 1:25



Solo com capacidade de suporte > 1.50 kgf/cm<sup>2</sup>  
Solo compactado sobre a sapata  
peso específico > 1600.00 kgf/m<sup>3</sup>

CORTE  
ESC 1:25



Relação do aço

AÇO	N	DIAM	Q	UNIT (cm)	C.TOTAL (cm)
CA60	1	5.0	78	98	7644
	2	5.0	169	76	12844
	3	5.0	13	23	299
	4	5.0	13	118	1534
	5	5.0	13	34	442
CA50	6	8.0	14	133	1062
	7	10.0	86	VAR	VAR
	8	10.0	36	127	4572
	9	10.0	90	132	11880
	10	10.0	2	75	150
	11	10.0	54	117	6318
	12	10.0	21	122	2562
	13	10.0	18	137	2466
	14	10.0	2	VAR	VAR
	15	10.0	12	112	1344

Resumo do aço

AÇO	DIAM	C.TOTAL (m)	PESO + 10% (kg)
CA50	8.0	18.7	8.1
CA50	10.0	473.4	321
CA60	5.0	227.7	38.6
<b>PESO TOTAL</b>			
CA50		329.1	
CA60		38.6	

Vol. de concreto total (C-25) = 5.48 m<sup>3</sup>  
Área de forma total = 51.25 m<sup>2</sup>

AMURES



ASSOCIAÇÃO DE MUNICÍPIOS DA REGIÃO SERRANA

PREFEITURA MUNICIPAL DE CAMPO BELO DO SUL

05

ASSESSORIA TÉCNICA

OBRA:

PROJETO: INDIAMARA DE OLIVEIRA RIBEIRO  
Eng.º Civil - CREA-SC 134548-3

ESCOLA LAGO AZUL  
Projeto Estrutural - Ampliação/Reforma

PREFEITO: Claudiane Varela Pucci

Planta de fundação e arranque dos pilares - e Cobertura

DESENHO: Jeziel Santos Ribeiro

Escala: Indicada  
DATA: OUTUBRO/2021