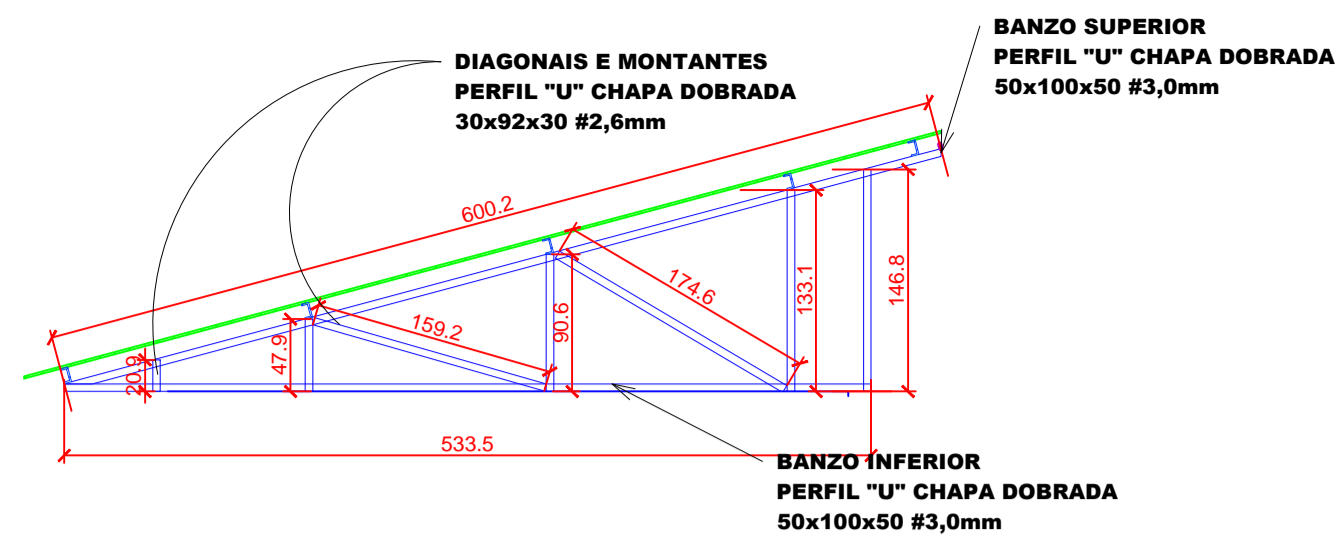
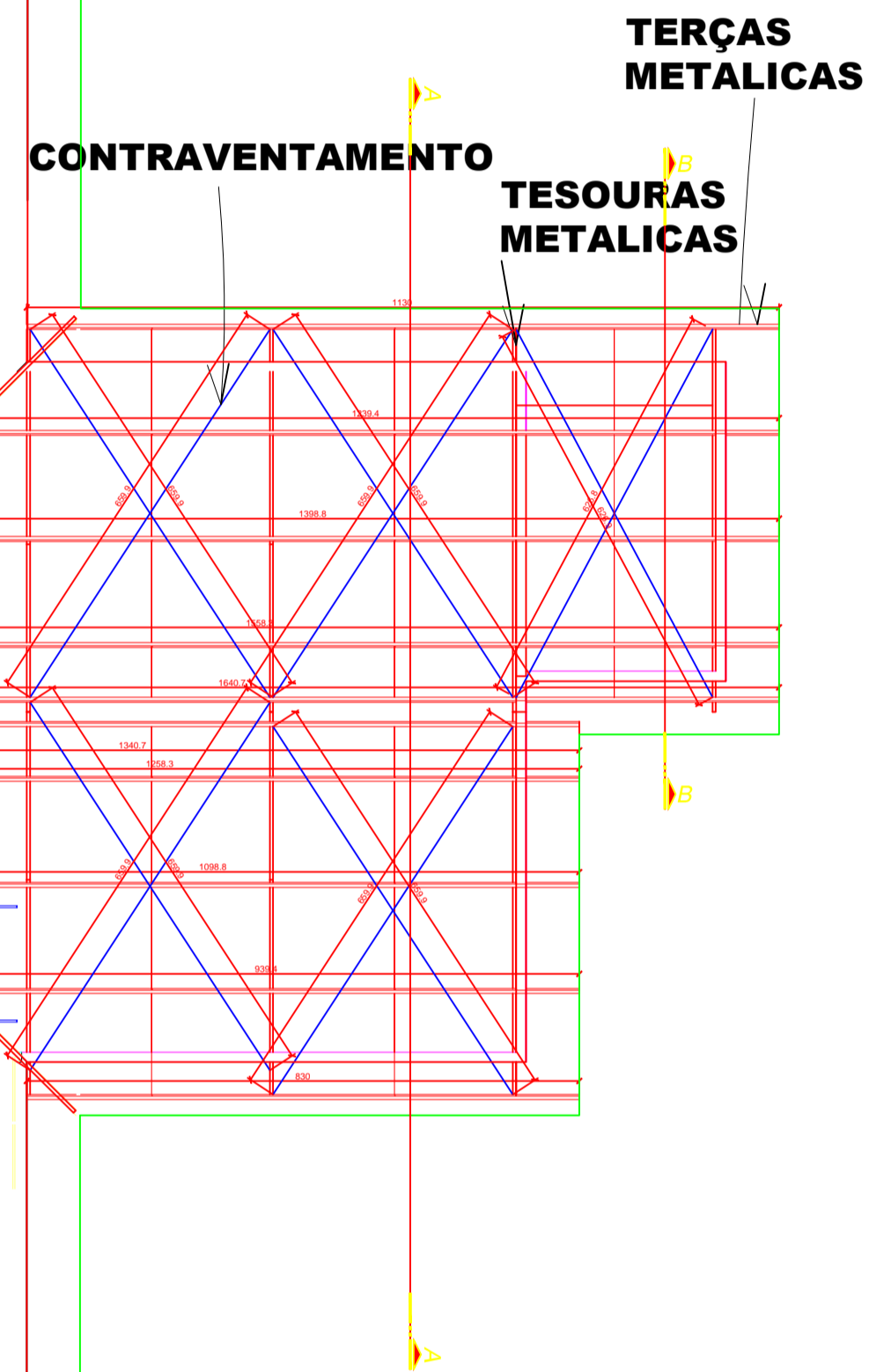
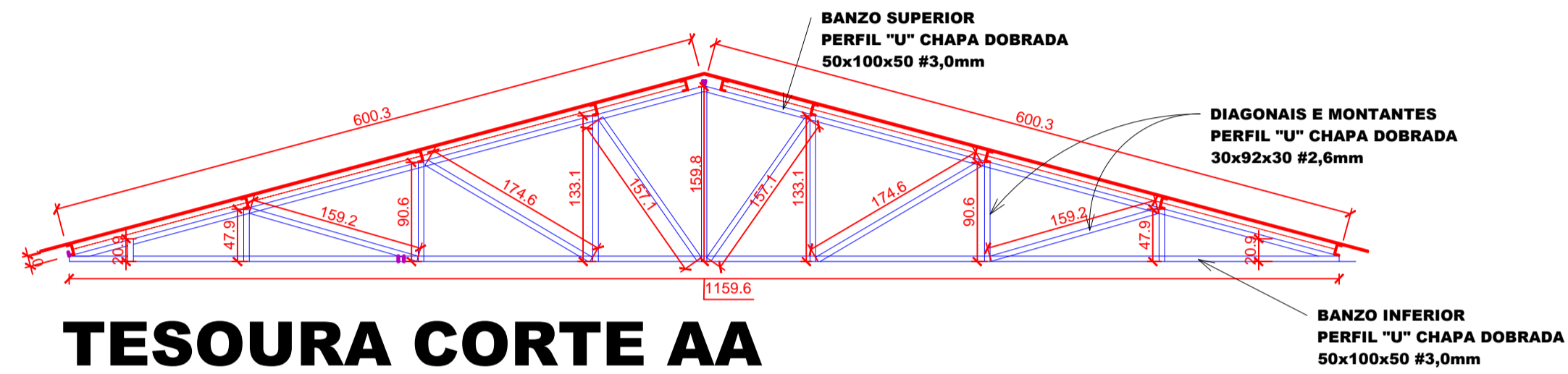
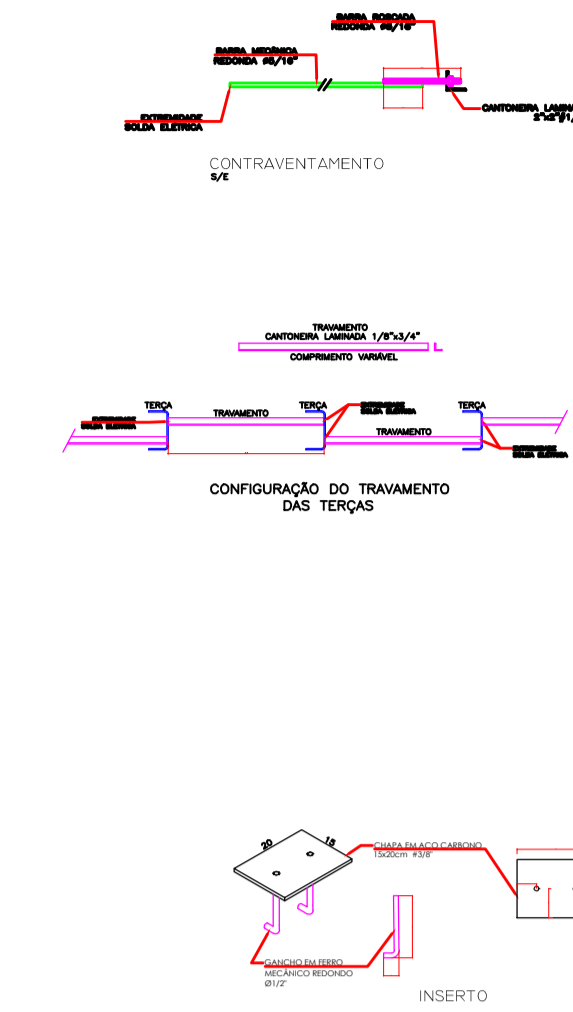


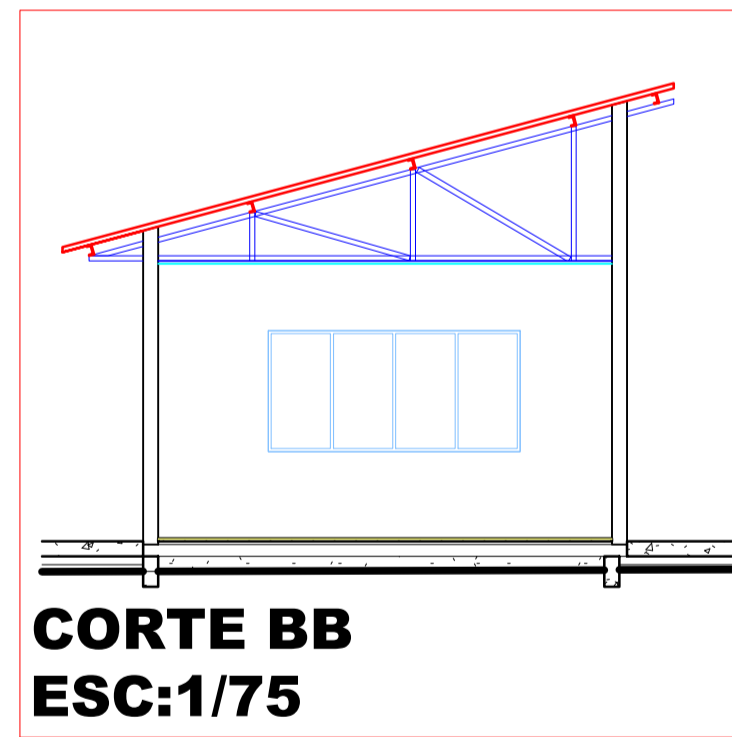
**COBERTURA
ESC:1/100**



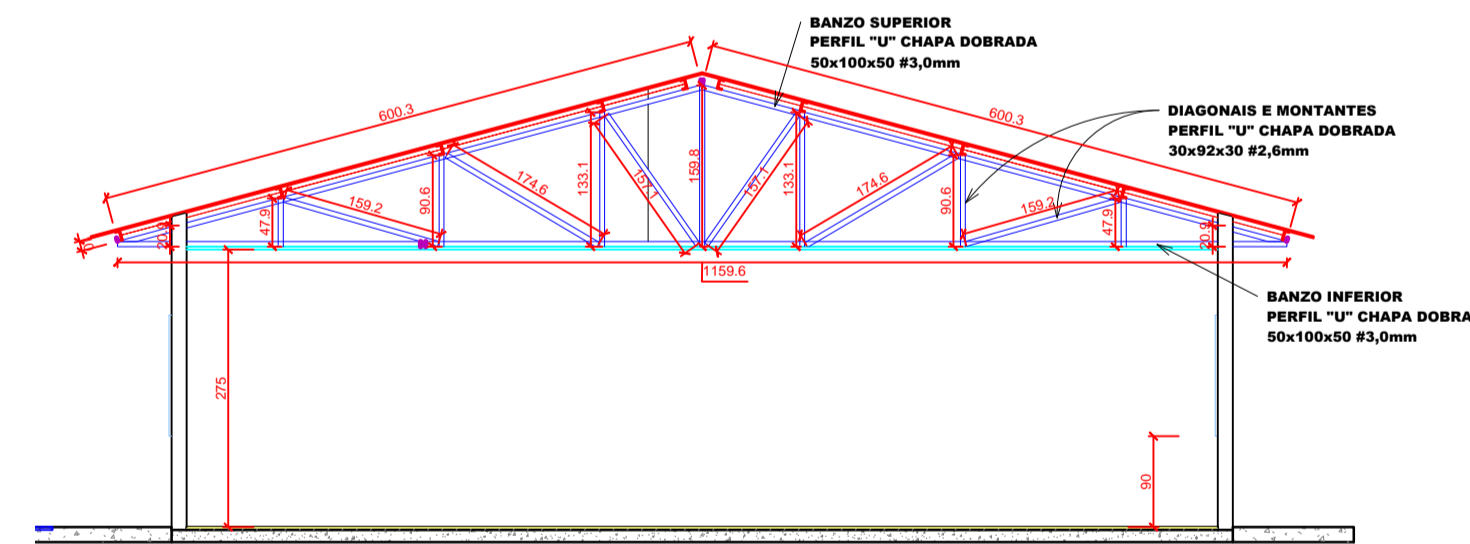
**TESOURA CORTE BB
ESC:1/75**



**TESOURA CORTE AA
ESC:1/75**



**CORTE BB
ESC:1/75**



**CORTE AA
ESC:1/75**

PEÇAS	PERFIU em u	COMPRIMENTOS (M)	KG/m	TOTAL kg
DIAGONAIS	30x92x30 #2,65mm	32,79	2,93	96,07
MOTANTES	30x92x30 #2,65mm	26,74	2,93	78,34
BANZO SUPERIOR	50x100x50 #3,00mm	42,18	4,43	186,87
BANZO INFERIOR	50x100x50 #3,00mm	40,13	4,43	177,78
			TOTAL KG	539,05

PEÇAS	PERFIU	COMPRIMENTOS (M)
CONTRAVENTAMENTO	FERRO MECANICO REDONDO	65,33
TRAVAMENTO DE TERÇAS	FERRO MECANICO REDONDO	29,2
TERÇAS	TOTAL KG	124,34
	TOTAL KG	218,87

AMURES



ASSOCIAÇÃO DE MUNICÍPIOS DA REGIÃO SERRANA

**PREFEITURA MUNICIPAL DE
CAMPO BELO DO SUL**

02

ASSESSORIA TÉCNICA

OBRA :

PROJETO:

INDIAMARA DE OLIVEIRA RIBEIRO
Eng. Civil - CREA 134548-3

PREFEITO:

CLAUDIANE VARELA PUCCI

Ampliação ESCOLA LAGO AZUL

planta baixa cobertura metálica, e cortes com detalhamento

DESENHO :

Jeziel Santos Ribeiro

TOPOGRAFIA :

Escala:

INDICADA

DATA :

10/2021