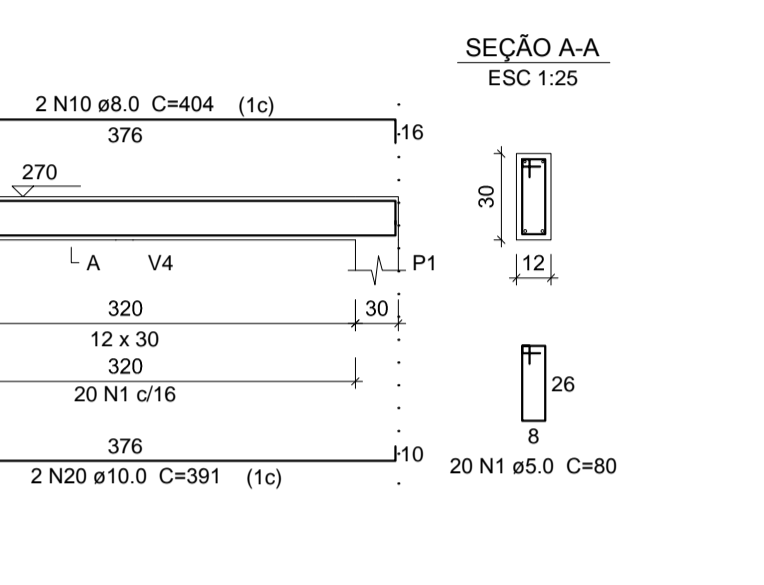
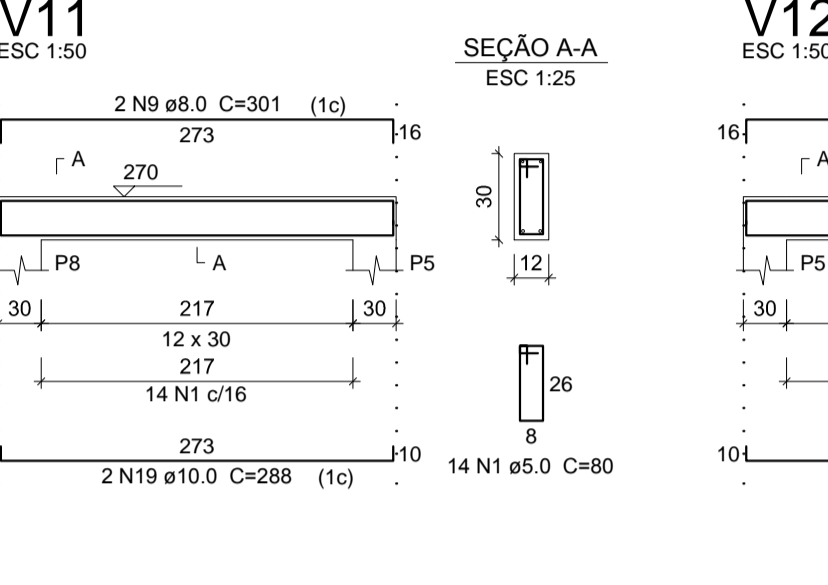
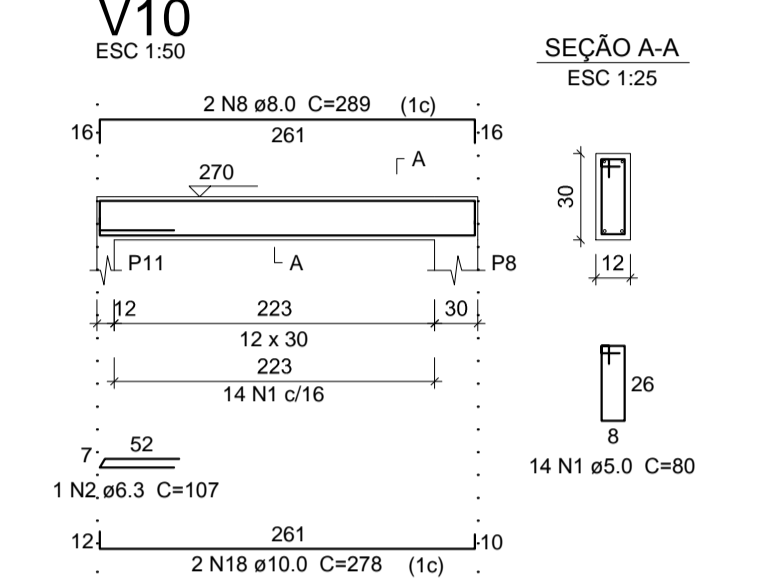
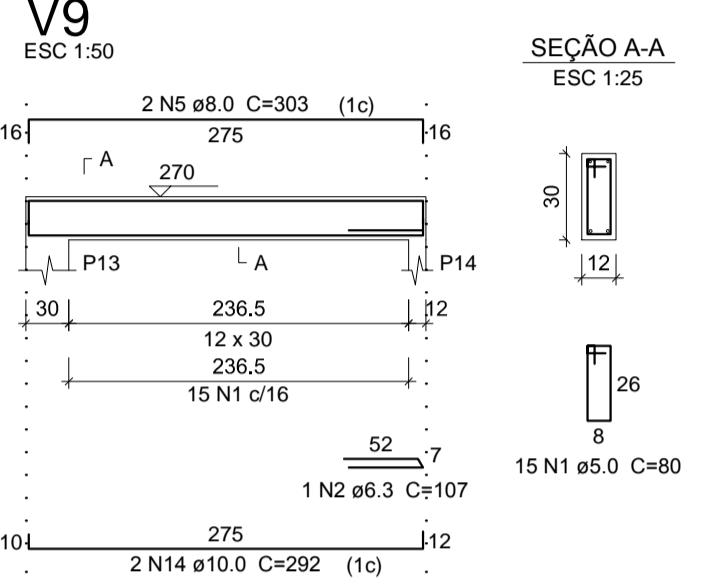
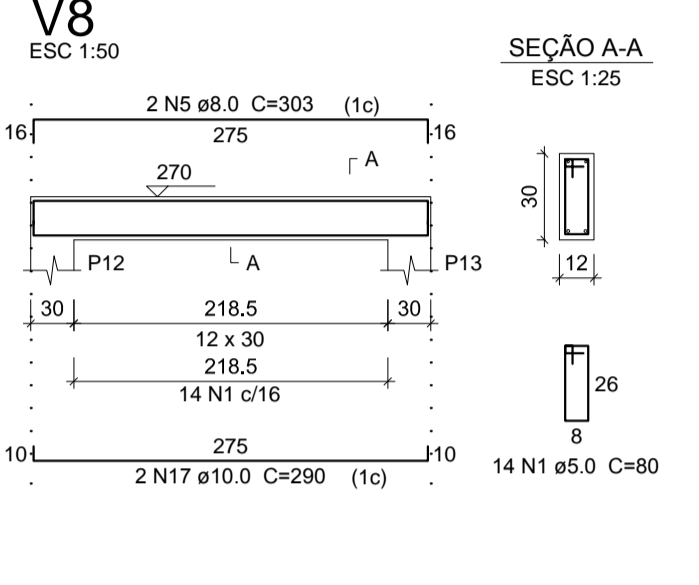
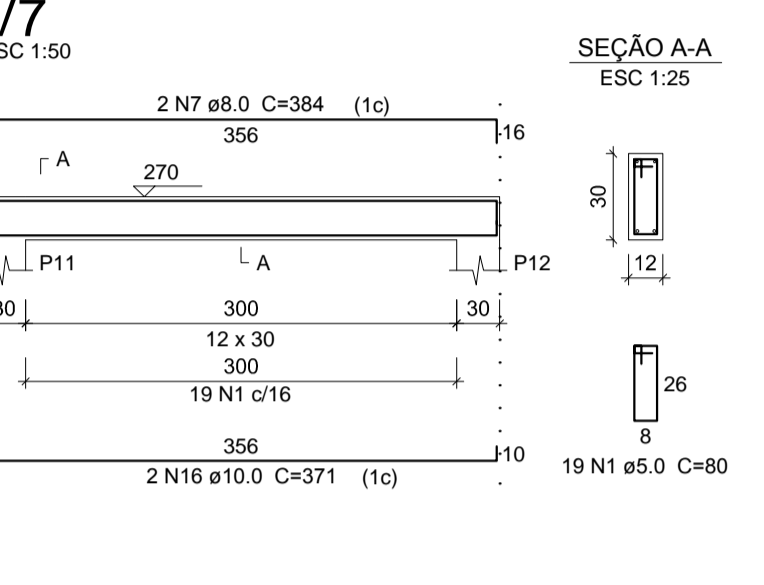


**Relação do aço**

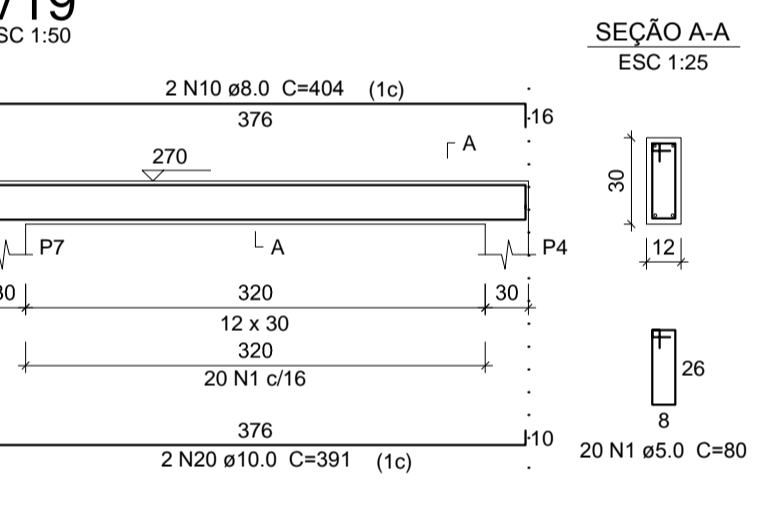
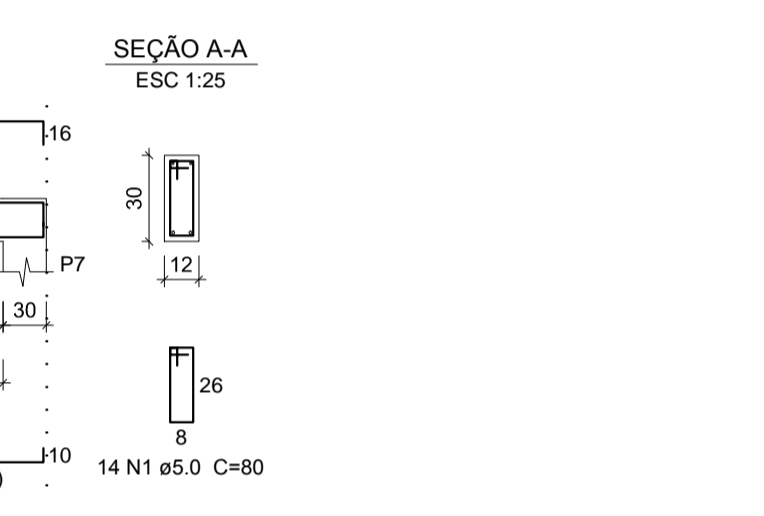
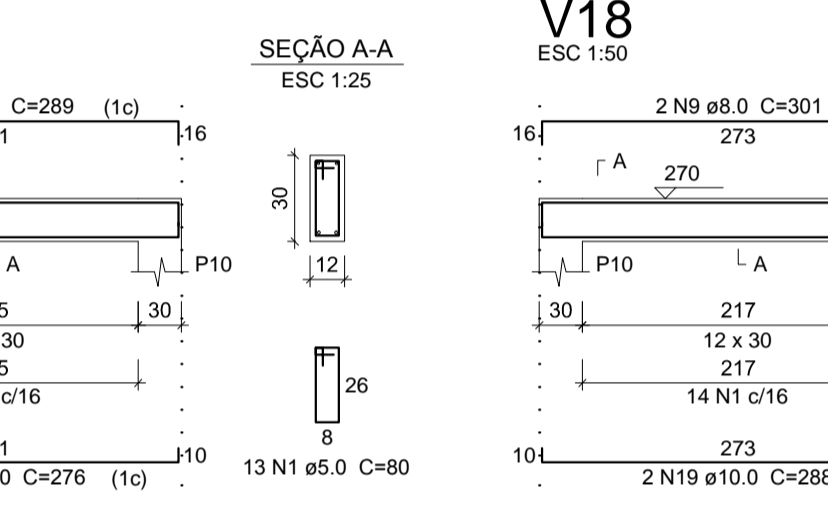
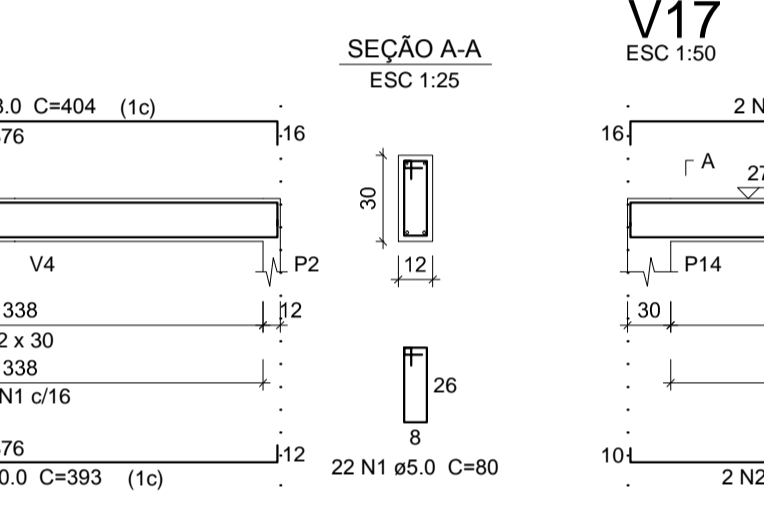
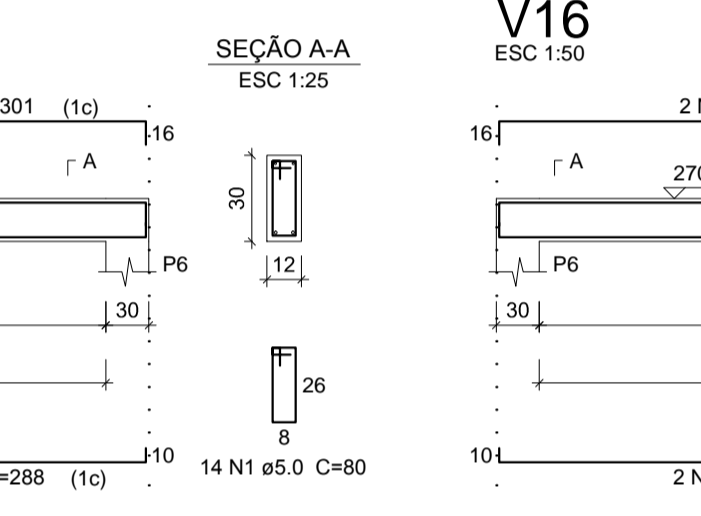
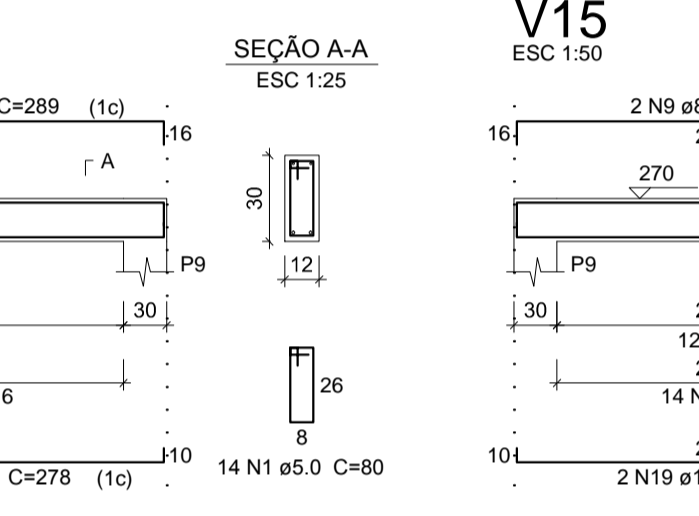
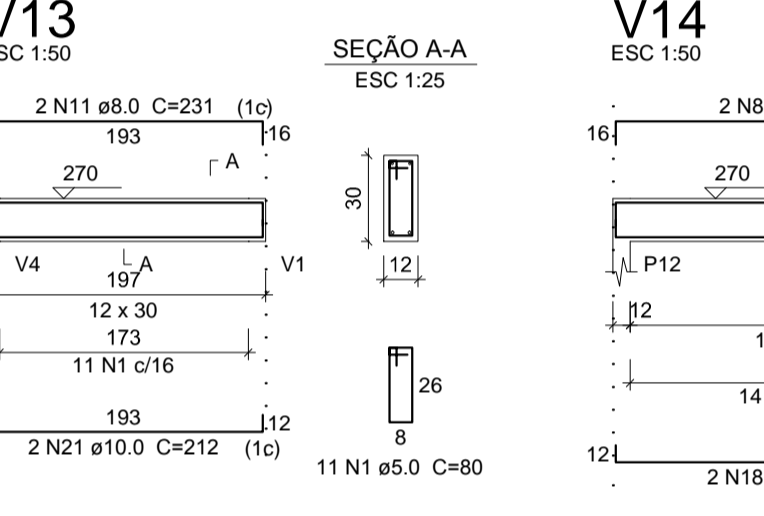
AÇO	N	DIAM (mm)	QUANT	C.UNIT (cm)	C.TOTAL (cm)
CA50	1	5.0	314	80	25120
CA50	2	6.3	4	107	428
CA50	3	8.0	2	375	750
CA50	4	8.0	2	312	624
CA50	5	8.0	6	303	1818
CA50	6	8.0	6	366	2196
CA50	7	8.0	2	384	768
CA50	8	8.0	6	289	1734
CA50	9	8.0	6	301	1806
CA50	10	8.0	6	404	2424
CA50	11	8.0	2	231	462
CA50	12	10.0	2	364	728
CA50	13	10.0	2	299	598
CA50	14	10.0	4	292	1168
CA50	15	10.0	6	357	2142
CA50	16	10.0	2	371	742
CA50	17	10.0	2	290	580
CA50	18	10.0	4	278	1112
CA50	19	10.0	6	288	1728
CA50	20	10.0	4	391	1564
CA50	21	10.0	2	212	424
CA50	22	10.0	2	393	786
CA50	23	10.0	2	276	552



**Resumo do aço**

AÇO	DIAM (mm)	C.TOTAL (m)	PESO + 10% (kg)
CA50	6.3	4.3	1.2
CA50	8.0	125.9	54.6
CA50	10.0	251.2	82.2
CA60	5.0	251.2	42.6
<b>PESO TOTAL (kg)</b>			
CA50	138		
CA60	42.6		

Volume de concreto (C-25) = 2.1 m³  
Área de forma = 41.93 m²



**Vigas Respaldo**  
escala 1:50

**MUNICÍPIO DE CAMPO BELO DO SUL**

PROJETO ESTRUTURAL - CAPELA MORTUÁRIA  
Avenida Brasil, Campo Belo do Sul - SC

PRANCHA: **03/03**

DATA: 31/08/2017    DESENHO: Sarah Dutra    ESCALAS: INDICADAS    AREA: 74,39 m²

RESPONSÁVEL TÉCNICO: SARAH DUTRA, Engenheira Civil, CREA - SC 123628-3

PROPRIETÁRIO: MUNICÍPIO DE CAMPO BELO DO SUL, CNPJ: 82.777.319/0001-92